

BCI

BASIC CONCEPTS INC



Secondary Containment **BERMS**



Safety **CONTAINERS**



Safety **CABINETS**



Versatile **ABSORBENTS**



Table of Contents

Introduction	2
How to Order	3

SPILL CONTAINMENT CATEGORY

FLEXIBLE CONTAINMENT BERMS

Rigid-Lock QuickBerm® and Accessories	4-7
Rigid-Lock QuickBerm® Lite	8-9
Rigid-Lock Decon QuickBerm® Lite	9

BULK STORAGE CONTAINMENT

Angle Bracket Berm	10
High-Wall Berm™	11

MAINTENANCE AND SMALL-SCALE SPILL CONTROL

Spill Pad and Spill Pad HD	12-13
Drip Berms	13
Pop-Up Pools	14
Ceiling Leak Diverters and Mini-Berm Flex Tray	15
Water Filled Boom Diverters / Water Filled Drain Covers	16
Waterproof Tarps	16
Absorbents (new spill kits and more) NEW	17-19

STRUCTURED SPILL CONTAINMENT AND RECYCLING

Accumulation Centers and Ramp	20
Spill Control Pallets	21
IBC Pallet and Shed	22
DrumSheds™	23
Spill Trays	24
Aerosolv® Aerosol Can Disposal System & Super System	25

SAFETY CATEGORY **NEW**

SAFETY CABINETS

Classic Safety Cabinets for Flammables	26-27
Slimline Safety Cabinet	28
Wall-Mount and Undercounter Safety Cabinets	29
Countertop and Compac Safety Cabinets and Aerosol Can Safety Cabinet	30
Safety Cabinets for Combustibles	31
Hazardous Material Safety Cabinets	32-33

SAFETY CONTAINERS

Type I Safety Cans	34
Type II Safety Cans	35
D.O.T. Safety Cans	36
Oily Waste Cans	37
Plunger Cans and Safety Drum Cover	38
Drum Funnel and Antistatic Wire	39

U.S. CHEMICAL STORAGE® BUILDINGS AND LOCKERS

Customized Buildings and Pre-Engineered Outdoor Safety Lockers	40
Custom Fire-Rated Buildings	41
Custom Non-Combustible and Modular Buildings	42
Parts and Accessories for Custom Building Application	43
Pre-Engineered Outdoor Safety Lockers	44
Accessories for Non-Combustible Pre-Engineered Lockers	45

SMOKING RECEPTACLES

Smoker's Cease-Fire® Smoking Receptacles	46
--	----

CUSTOM DESIGN

Custom Capabilities	47
---------------------	----



Total Containment Solutions

For years you've trusted Basic Concepts as your go-to source for spill containment products. From Cleveland to Dubai, BCI products are hard at work, providing spill protection berms for military, commercial, and municipal applications.

NEW Expanded product line and catalog

Absorbents for Workplace Safety and Environmental Preservation

Designed with greater absorption capacity and increased tensile strength, our new line of polypropylene absorbents meets all your spill control requirements—from small machinery leaks to major oil spill accidents. We offer a wide range of absorbent pads, rolls, mats, socks, pillows, booms, and spill kits help you maintain clean and safe work areas and comply with worker safety and environmental regulations.

Safety Products to Reduce Fire Risks

Welcome to our new line of safety cabinets, safety cans, and related products for liquid flammable safety. Our new cabinets allow you to store hazardous chemicals safely and help you organize, segregate, and visually identify dangerous liquids. Most are fire tested and approved by FM Approvals and meet the National Fire Protection Association (NFPA 30) and OSHA 29 Code of Federal Regulations. They include a 10-year warranty.

Our new safety cans include a variety of sizes and styles. Each one starts with quality materials, superior workmanship, and rigorous testing so it will stand up to years of hard use. They are FM-approved and/or UL-listed, and meet OSHA standards. When handling fuel, solvents, or other potentially hazardous liquids, use safety cans to protect your people, property, and the environment.



For even larger hazardous storage needs, we now offer safety storage lockers and buildings through affiliation with U.S. Chemical Storage (USCS). From ready-made pre-engineered two-drum lockers, to a custom-designed building, USCS offers a solution to virtually any storage requirement. See pages 40-45 to learn more.

Environmental Readiness Matters ... that's why Basic Concepts spill containment products are second to none.

Offering advanced patented technology, quality materials, and superior workmanship, Basic Concepts products have been protecting people and the environment across the globe for more than 25 years. Our feature-rich designs make spill containment easy, reliable, and long lasting. Flexible, portable spill containment comes in a variety of configurations and materials, ready to meet your every need.



*Don't see what you need?
We'll custom build it! See page 47 for details.*



Choices for Different Applications

Flexible geomembrane liners provide protection from exposure to oils, fuels, and chemicals. Choose the BC material that best meets your application—ranging from light-duty, to moderate, to exceptional performance. Consider the attributes below when choosing the product that matches your specific need.

Geomembrane Liner

Star Rated: 5 = BEST



Abrasion resistance	★	★★	★★★	★★★★	★★★★★
Puncture resistance	★	★★	★★★	★★★★	★★★★★
Tensile/tear strength	★★	★★	★★★	★★★★	★★★★★
Temperature range	★★	★★★★	★★★★	★★★	★★★★★
Chemical resistance - petroleum based	★★	★★★	★★★★	★★★★	★★★★★
Chemical resistance - general acids	★★★	★★★★	★★★★★	★★★★★	★★
UV resistance	★	★★	★★★★	★★★	★★★★★

Explanations of table info in this catalog

Approval and Compliance Key

FM	FM Approvals tested and approved
UL/ULC	Underwriters Laboratories listed in the U.S. and Canada
N	Complies with National Fire Protection Association (NFPA) Flammable and Combustible Liquids Code 30
O	Complies with Occupational Safety and Health Administration (OSHA) Regulations
I	Complies with the International Fire Code
A	Complies with NFPA 1 Fire Code, 2012 Edition
A9	Complies with NFPA 1 Fire Code, 2009 Edition
H	Complies with NFPA 400 Hazardous Material Code
E	Complies with Environmental Protection Agency (EPA) Regulations
S	Supports EPA Spill Prevention, Control and Countermeasures Rule (SPCC)
V	Validated by the EPA Environmental Technology Verification Program

How to Order

PHONE: 800-285-4203
(8 a.m. to 5 p.m. Eastern Standard Time, Monday through Friday)

FAX: 864-224-7063

Payment Options



Email us at Sales@BasicConcepts.com

Rigid-Lock QuickBerm®

Versatile, drive-in secondary spill containment for safety, regulatory compliance, and environmental stewardship

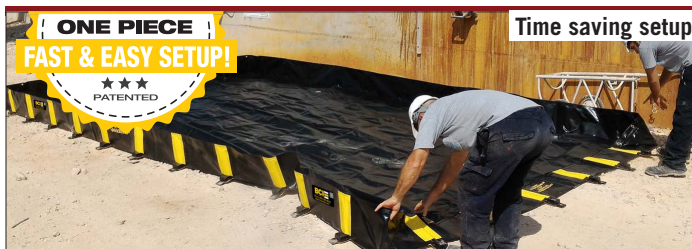
- Fast and easy setup in minutes, no assembly needed!
- Single-piece construction—patented Rigid-Lock wall-support system integral to berm provides unobstructed work space.
- Stainless steel brace supports lock the walls at a full 90° for secure, strong structural integrity—no sagging.
- Sidewalls lower quickly for easy drive-in and out.
- Flexible, durable geomembrane liner withstands a broad range of chemicals including petroleum, oils, grease, and most acids.
- Reinforced CriticalCorner™ design features wraparound diagonal radio frequency (RF) welds to prevent seam leaks and extend berm life expectancy.
- Top rim of walls finished with a 1-in (25-mm) hem for added strength.
- Each brace support includes a Rigid-Lock base with integrated hole for optional anchoring.
- Folds down for easy portability, permits immediate spill response.
- Reliable, 100% leakproof protection helps comply with EPA for containment and spill prevention (SPCC)
- Excellent puncture and abrasion resistance—choice of 4 materials to accommodate light- to heavy-duty work requirements.



Use Rigid-Lock QuickBerm® to capture potential spills when dispensing from an IBC.

Ideal for:

- Vehicles
- Tankers
- Heavy equipment
- 55-gallon drums
- Intermediate bulk containers (IBCs)
- Generators
- Pumps
- Air compressors
- Pillow tanks
- Storage tanks



Ready in minutes!

Time saving setup in 2 quick steps!



1
Unfold berm, with supports in flat position.

2
A simple tug locks supports in upright position.

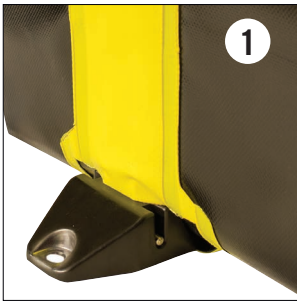
Fully deployed for quick spill readiness!



Proper secondary spill containment practices offer these benefits:

- captures dangerous spills
- protects the environment
- reduces slip and fall accidents
- reduces hazardous clean-up costs
- avoids costly fines
- complies with regulations

Rigid-Lock QuickBerm® offers unmatched performance!



1. Sets up to a 90° locked position—brace support withstands wind loads of 40 miles per hour. An integrated hole permits easy anchoring.

2. Stainless steel brace support is encased in a durable Rigid-Lock base that features an integrated hole for optional anchoring.

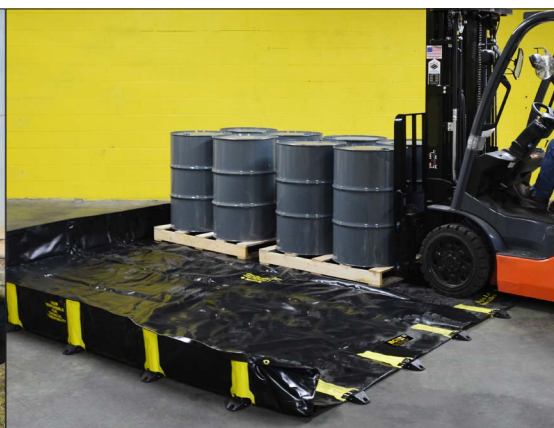
3. CriticalCorner™ wraparound design prevents seam leaks for fluid-tight reliability.



4. Supports resist extreme temperatures of -50° to 160°F (-45.5° to 71.1°C). When in down position, they withstand vehicle weights in excess of 11,000 lbs (4,990 kg) at each tire.

5. Drive-through at any angle.

6. Folds down for compact storage in a vehicle or in your facility for quick access.





Customize your Rigid-Lock QuickBerm®!

- Size: any length, any width.
Wall heights of 8- or 12-inch
(203- or 305-mm)
- Auto-deploy Fail-Safe® walls
- Shape
- Integrated protection mats
- Private labeling



Rigid-Lock QuickBerm® provides compliant secondary containment with standard sizes offering capacities ranging from 175- to 5,236 gallons (662- to 19,820 liters).

Need something larger or have a unique requirement for your business? With our custom design program, our experienced, knowledgeable sales and engineering staff will create a solution to meet your specific need.

Fail-Safe® for Effortless Drive-in Capability

Specify Fail-Safe® flotation device on entry/exit walls, enabling drive-in and drive-out with no need to raise or lower the wall.

In the event of a leak or spill, self-erecting Fail-Safe® flotation device rises as the fluid level rises. Entry/exit walls also feature the Rigid-Lock brace support, which will lock into position with the rising fluid level. You have the option to engage the Rigid-Lock brace support into the upright position in case of snow or ice.



Custom sizes to fit a space or specific vehicle.



Convenient, integrated protection mats.



Different materials, different applications



Suitable for infrequent drive-in or -out scenarios, pedestrian traffic, and for placing heavy materials within the working space



More durable and thicker, suitable for more frequent drive-in or -out applications



Provides excellent chemical resistance to corrosive solvents and general acids



Offers optimum chemical resistance to petroleum, oils, and greases

For any drive-in/out application, providing exceptional performance against abrasion and punctures

Accessories for Rigid-Lock QuickBerm®

Ground and Track Berm Guards for All Drive-Through Berms

Improve berm longevity without sacrificing functionality

- Use **ground mats under berms** to create a smooth, uniform deployment area. Heavy-duty woven fabric improves wear resistance.
- Use **track mats inside berm** for extra protection along tire paths. Thick, durable black woven fabric protects floors and walls from abrasion caused by skidding, turning, and braking.
- Available in heavy-duty coated polyester, or economical, lightweight coated vinyl for infrequent use.



Track and ground mats improve wear resistance and extend the life of your berm.



Custom welded-in track mat.

Petro-Pipe® for All Flexible Containment Berms

Environmentally-conscious way to ensure water being drained from your berm is oil-free

- Patented system allows water to drain while trapping harmful hydrocarbon-based fuels and oils.
- Eliminates the need to manually drain berm after a rainstorm.
- Works 24/7 for continuous unmonitored drainage of the berm—shuts off automatically when completely saturated.
- Order as part of the custom design program, or retrofit to any flexible berm.



Capacity Gal/L	Dimensions W x L x H		Model No	Ship Wt lb/kg	Model No	Ship Wt lb/kg	Model No	Ship Wt lb/kg	Model No	Ship Wt lb/kg
	Interior	Folded								
175/662	4 ft x 6 ft x 12 in 1.2 m x 1.8 m x 305 mm	24 in x 24 in x 5 in 610 mm x 610 mm x 127 mm	1050-01746-026	23/10	1050-01746-105	25/10	1050-01746-102	31/14	1050-01746-201	25/11
355/1344	6 ft x 8 ft x 12 in 1.8 m x 2.4 m x 305 mm	24 in x 24 in x 12 in 610 mm x 610 mm x 305 mm	1050-01931-026	35/16	1050-01931-105	38/17	1050-01931-102	47/21	1050-01931-201	39/18
745/2820	10 ft x 10 ft x 12 in 3.0 m x 3.0 m x 305 mm	28 in x 28 in x 12 in 711 mm x 711 mm x 305 mm	1050-01799-026	56/26	1050-01799-105	61/28	1050-01799-102	78/35	1050-01799-201	63/29
1196/4527	10 ft x 16 ft x 12 in 3.0 m x 4.9 m x 305 mm	120 in x 192 in 3048 mm x 4877 mm	1050-01762-026	791/359	1050-01762-105	85/39	1050-01762-102	111/51	1050-01762-201	90/41
2510/9501	12 ft x 28 ft x 12 in 3.7 m x 8.5 m x 305 mm	32 in x 32 in x 16 in 813 mm x 813 mm x 406 mm	1050-01835-026	139/63	1050-01835-105	152/70	1050-01835-102	202/92	1050-01835-201	160/73
3410/12908	12 ft x 38 ft x 12 in 3.7 m x 11.6 m x 305 mm	144 in x 456 in 3658 mm x 11582 mm	1050-03958-026	281/128	1050-03958-105	198/90	1050-03958-102	264/120	1050-03958-201	206/94
5236/19820	14 ft x 50 ft x 12 in 4.3 m x 15.2 m x 305 mm	168 in x 600 in 4268 mm x 15240 mm	1050-03547-026	225/102	1050-03547-105	280/127	1050-03547-102	378/172	1050-03547-201	295/134

Note (1): For exterior dimension, add 8-in (203-mm) to width and length to account for support and hub.

Note (2): When selecting a berm size, allow 12-in (305-mm) at entry or exit for lowering and raising the wall.



Rigid-Lock QuickBerm® Light

Versatile, on-the-go spill containment!
Lightweight — folds down to a small size for storage in trucks, emergency vehicles, and spill kits

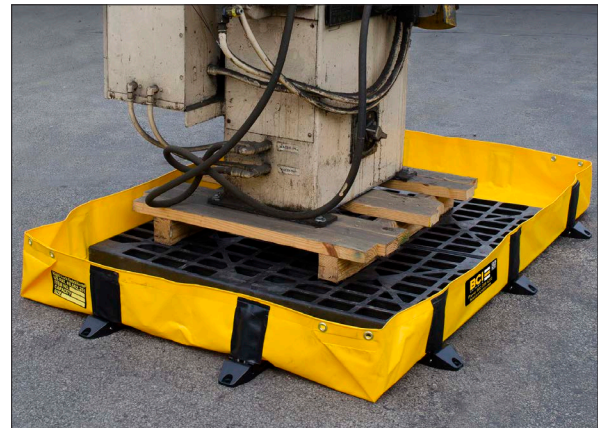
- Portable, one-piece design sets up fast and easy.
- Unobstructed 100% leakproof sump captures spills from saddle tanks, hydraulic lines, pipes, batteries, machinery, and drums.
- Tough geomembrane liner provides broad UV and chemical resistance.
- Patented Rigid-Lock walls with stainless steel braces lock at 90° for strong structural integrity.
- Durable engineered nylon hub accepts optional anchors for use in windy conditions.
- Add optional grates for use as a decon station or to lift containers above contaminated liquid.



Use for personnel decontamination.

Many uses:

- Damaged saddle tanks
- Emergency decon station
- Leaky containers
- Hydraulic leaks and breaks
- Battery or transformer storage
- Refueling overfills



Capture spills from leaky equipment.

ONE PIECE
FAST & EASY SETUP!

★★★
PATENTED

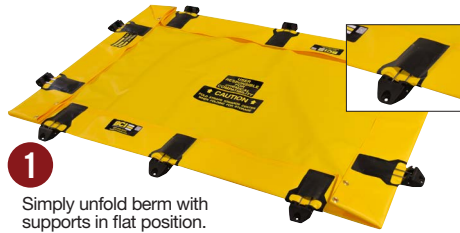


Ready in 2 quick steps!

Rigid-Lock QuickBerm® Lite continued



Compact Storage!



1

Simply unfold berm with supports in flat position.



2

A simple tug locks wall in upright position.



One piece, no assembly needed or parts to lose. Fully operational in just minutes!



Capacity Gallons/Liters	Dimensions W x L x H		Model No	Ship Wt lb/kg
	Interior	Folded		
79/299	4 ft x 4 ft x 8 in 1.2 m x 1.2 m x 203 mm	16 in x 12 in x 5 in 406 mm x 305 mm x 127 mm	1054-03654-106	13/5
119/451	4 ft x 6 ft x 8 in 1.2 m x 1.8 m x 203 mm	16 in x 14 in x 6 in 406 mm x 356 mm x 152 mm	1054-03655-106	16/6
159/602	4 ft x 8 ft x 8 in 1.2 m x 2.4 m x 203 mm	16 in x 14 in x 6 in 406 mm x 356 mm x 152 mm	1054-03656-106	20/9
318/1204	8 ft x 8 ft x 8 in 2.4 m x 2.4 m x 203 mm	16 in x 14 in x 12 in 406 mm x 356 mm x 305 mm	1054-03657-106	29/13
398/1507	8 ft x 10 ft x 8 in 2.4 m x 3.0 m x 203 mm	16 in x 14 in x 14 in 406 mm x 356 mm x 356 mm	1054-03658-106	33/15

Note (1): For exterior dimension, add 8-in (203-mm) to width and length to account for support and hub.

Note (2): When selecting a berm size, allow 8-in (203-mm) at entry or exit for lowering and raising the wall.

Rigid-Lock Decon QuickBerm®

Deploys in seconds—one berm handles multiple decontamination zones simultaneously

- Durable geomembrane liner with patented interior walls form multiple zones for different solutions.
- 2, 3, or 4 washdown zones—One ¾-in GHT (garden hose thread) drain fitting per zone.
- Use optional grating to keep personnel above the fluid.



Multiple interior walls, each with inside brace support system, enable you to accommodate up to four separate solutions at the same time.



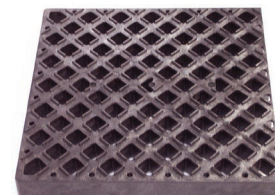
Capacity Gallons/ Liters	Zones	Dimensions W x L x H		Model No	Ship Wt lb/kg
		Interior	Folded		
299/1132	2	6 ft x 10 ft x 8 in 1.8 m x 3.0 m x 203 mm	24 in x 24 in x 4 in 610 mm x 610 mm x 102 mm	1059-03805-106	20/9
478/1810	3	6 ft x 16 ft x 8 in 1.8 m x 4.9 m x 203 mm	26 in x 26 in x 5 in 660 mm x 660 mm x 127 mm	1059-03806-106	34/15
598/2264	4	6 ft x 20 ft x 8 in 1.8 m x 6.1 m x 203 mm	28 in x 28 in x 4 in 711 mm x 711 mm x 102 mm	1059-03807-106	46/21

Decon Grating

Keep personnel and parts away from fluids and contaminants

- Durable, anti-slip grates for use with Rigid-Lock QuickBerm® Lite or Rigid-Lock Decon QuickBerm®
- Chemical resistant, easy-to-clean polyethylene.

Description	Dimensions W x L x H	Model No	Ship Wt lb/kg
Polyethylene Grating	2 ft x 2 ft x 2 in 0.6 m x 0.6 m x 51 mm	2091-02085	12/5
Polyethylene Grating	2 ft x 4 ft x 2 in 0.6 m x 1.2 m x 51 mm	2091-02086	25/11





Angle Bracket Berm

Economical secondary spill containment—suitable for stationary containment needs

- Best for applications with limited need to vehicles drive in/out, such as storage for transformers, generators, metal/poly tanks, IBCs, oiling/refueling operations, and more.
- Arrives folded for easy shipping—assemble by simply slipping angle brackets into slots.
- Angle L-brackets provide sturdy sidewall support—in steel or aluminum.
- Top 1-inch hem adds strength and prevents wall sag—reinforced corners for 100% containment.
- Fuel and chemical-resistant geomembrane liner.
- Custom sizes available with walls from 18- to 24-inch high.



Affordable spill containment for small- to big-scale applications.



Slip angle L-brackets into protective pockets to keep walls upright, no sagging.



Optional Petro-Pipe® automatically drains rainwater from any berm, while trapping harmful hydrocarbon-based fuels and oils (see page 7).



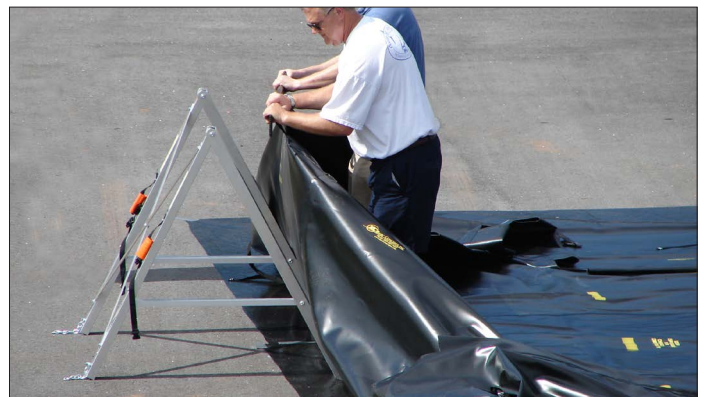
High-Wall Berm

Highly flexible spill control berm that contours to uneven terrains—suitable for stationary containment needs

- Best for applications with limited need to drive in/out, such as storage for transformers, generators, metal/poly tanks, IBCs, oiling/refueling operations, and waste materials.
- Independent, 3-feet (0.9 m) tall all aluminum quick-set A-frame supports allow adjustment to grassy, hilly, bumpy surfaces.
- Deploys in field in less than an hour with 5 people, no tools required.
- Rugged geomembrane liner for excellent abrasion, puncture, and chemical resistance.
- Custom sizes to fit any type of equipment.



High-wall berm provides secondary containment for horizontally- or vertically-stored metal or poly tanks.



No tools needed to assemble. Securely attach liner portion of the berm to the aluminum A-frame supports which are spaced four feet apart.



Custom-size a high-wall berm to fit your unique application (shown here: 20-ft wide x 32-ft long).

**INTERLOCKING DESIGN
ALL-TERRAIN USE**

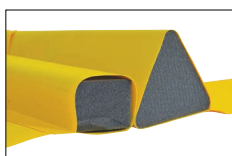
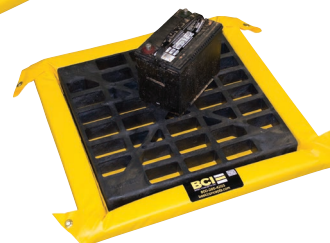
★★★
PATENTED



Spill Pads

Roll-over sidewalls for easy leak containment or washdowns

- Encased urethane foam soft sidewalls for use with drum dolly—springs back into place with no memory loss.
- No assembly required—simply unfold for instant use in shop or field.
- Lightweight, durable geomembrane liner contains minor leaks and spills, available in 2- or 4-inch high walls.
- Corners designed to accept optional grommets for anchoring in place.
- Optional grates keep containers above spills (see page 9).



All spill pads available in 2-in (51-mm) and 4-in (102 mm) heights.



Sizes shown: 2 ft x 4 ft, 2 ft x 2 ft



Roll-over sidewalls offer easy drum placement—foam walls quickly spring back for secure containment.

Spill Pads HD

Capture spills from small vehicles and heavy equipment with convenient drive-in access

- Heavy-duty, geomembrane liner resists the harshest of liquids, including petroleum, oils, greases, and most acids.
- Withstands long-term UV exposure, great for outdoor use.
- 4-way entry points allow forklift trucks and small vehicles to roll-over foam sidewalls with ease—walls springs back into place with no memory loss.
- One-piece, leakproof design contains small vehicles, drums, machine parts—available in 2- or 4-inch wall heights.
- Corners designed to accept optional grommets for anchoring in place.
- Optional grates elevate leaky drums or parts (see page 9).





Spill Pad and Spill Pad HD continued

Spill Pad



Spill Pad HD



Capacity Gallons/Liters	Interior W x L	Dimensions Folded W x L x H	Sidewall Height	Model No	Ship Wt lb/kg	Model No	Ship Wt lb/kg
5/19	2 ft x 2 ft 0.6 m x 0.6 m	30 in x 30 in x 2 in 762 mm x 762 mm x 51 mm	2 in 51 mm	2002-00096-106REC	8/4	2002-00096-101REC	9/4
10/38		30 in x 30 in x 4 in 762 mm x 762 mm x 102 mm	4 in 102 mm	2004-02606-106	10/5	2004-02606-101	11/5
10/38	2 ft x 4 ft 0.6 m x 1.2 m	30 in x 54 in x 2 in 762 mm x 1372 mm x 51 mm	2 in 51 mm	2002-00148-106REC	10/5	2002-00148-101REC	
20/76		16 in x 30 in x 16 in 406 mm x 762 mm x 406 mm	4 in 102 mm	2004-01275-106	12/5	2004-01275-101	13/6
40/151	2 ft x 8 ft 0.6 m x 2.4 m	28 in x 28 in x 16 in 711 mm x 711 mm x 406 mm	4 in 102 mm	2004-02605-106	18/8	2004-02605-101	19/8
20/76	4 ft x 4 ft 1.2 m x 1.2 m	30 in x 30 in x 6 in 762 mm x 762 mm x 152 mm	2 in 51 mm	2002-00940-106REC	14/6	2002-00940-101REC	15/6
40/151		20 in x 24 in x 16 in 508 mm x 610 mm x 406 mm	4 in 102 mm	2004-01037-106	19/9	2004-01037-101	20/10
60/227	4 ft x 6 ft 1.2 m x 1.8 m	24 in x 24 in x 16 in 610 mm x 610 mm x 406 mm	4 in 102 mm	2004-01262-106	26/12	2004-01262-101	28/13
40/151	4 ft x 8 ft 1.2 m x 2.4 m	30 in x 30 in x 12 in 762 mm x 762 mm x 305 mm	2 in 51 mm	2002-00721-106REC	28/13	2002-00721-101REC	30/14
80/303		36 in x 36 in x 16 in 914 mm x 914 mm x 406 mm	4 in 102 mm	2004-01503-106	32/15	2004-01503-101	33/15
44/167	6 ft x 6 ft 1.8 m x 1.8 m	24 in x 24 in x 16 in 610 mm x 610 mm x 406 mm	2 in 51 mm	2002-01966-106REC	31/14	2002-01966-101REC	
90/341		38 in x 38 in x 16 in 965 mm x 965 mm x 406 mm	4 in 102 mm	2004-01272-106	84/38	2004-01272-101	86/39
135/511	10 ft x 11 ft 3.0 m x 3.4 m	28 in x 28 in x 16 in 711 mm x 711 mm x 406 mm	2 in 51 mm	2003-00070-106REC	50/23	2003-00070-101REC	53/24
220/833	10 ft x 18 ft 3.0 m x 5.5 m	30 in x 30 in x 16 in 762 mm x 762 mm x 406 mm		2003-00048-106REC	65/30	2003-00048-101REC	67/30

Note: For exterior dimension on 4-in (102-mm) models, add 12-in (305-mm) to width and length.
For exterior dimension on 2-in (51-mm) models, add 6-in (152-mm) to width and length.

Drip Berms

Capture small oil leaks and drips before they contaminate the ground or create unsafe work surfaces

- Lightweight, flexible and portable—use to catch drips from leaky vehicles, industrial machinery, hydraulic lines, pipes, and drums.
- Replaceable, oil-only sorbent within a welded, leakproof barrier—reusable outer shell with refill packs available.
- Patented, coated mesh outer layer traps coarse debris.
- Chemical-resistant, durable geomembrane liner—rated for drive-over applications.
- Brass grommets in opposing corners accept anchor stakes (not included)
- Two sizes; extended model with weighted bottom holds berm in place in winds up to 50 mph.

Regular Drip Berm
21-in x 23-in.



Extended Drip Berm 24-in x 36-in.

Description	Capacity Gallons/Liters	Product W x L	Dimensions Folded W x L x H	Model No	Ship Wt lb/kg
Drip Pad with 5-Pack Sorbents	1.25/5	21 in x 23 in 533 mm x 584 mm	—	3001-00124-368	4/2
Extended Drip Pad with 5-Pack Sorbents	1.75/7	24 in x 36 in 610 mm x 914 mm	24 in x 12 in x 6 in 610 mm x 305 mm x 152 mm	3003-00074-368	8/4
Drip Pad 5-Pack Refill	1.25/5	15 in x 19 in 381 mm x 483 mm	—	3001-00124-PAD	2/1
Extended Drip Pad 5-Pack Refill	1.75/7	30 in x 52 in 762 mm x 1321 mm	—	3003-00074-PMAT	4/2



Pop-Up Pools

***Economical spill
containment that
deploys instantly!
Helps minimize
environmental
damage and related
clean up costs.***



Folds to a compact size for storage
in tight spaces.



Space-saving design for emergency spill control from ruptured saddle tanks.



Use for temporary spill containment for leaky drums.

- Use to catch leaks and spills from punctured saddle tanks, leaking drums, blown hydraulic lines.
- Lightweight, on-the-go spill control folds easy for storage in vehicles, on shelves, near shipping docks.
- Embedded foam ring top raises wall as fluid level increases.
- Durable geomembrane liner for reliable seam adhesions and chemical and abrasion resistance.



Bright safety yellow color for
quick visibility. Sizes up to
150 gallon capacity.



Capacity Gallons/Liters	Dimensions		Model No	Ship Wt lb/kg
	Product Diameter x H	Folded W x L x H		
20/76	31 in x 11.75 in 787 mm x 298 mm	18 in x 12 in x 3 in 457 mm x 305 mm x 76 mm	7001-02695-10622	2/1
66/250	46 in x 14 in 1168 mm x 355 mm	18 in x 16 in x 6 in 457 mm x 406 mm x 152 mm	7001-02696-10622	6/3
100/379	50 in x 18.75 in 1270 mm x 476 mm	24 in x 24 in x 3 in 610 mm x 610 mm x 76 mm	7001-02697-10622	11/5
150/568	62 in x 16 in 1574 mm x 406 mm	24 in x 24 in x 5 in 610 mm x 610 mm x 127 mm	7001-02698-10622	14/6

Ceiling Leak Diverters

Economical way to respond quickly to roof leaks and protect your equipment and inventory from water damage

- Economical way to respond quickly to roof leaks and protect your equipment and inventory from water damage.
- Avoid downtime after a roof leak and keep floors dry and safe from slip accidents.
- Durable, puncture resistant and watertight geomembrane liner for long life.
- Accepts a standard garden hose to channel overhead pipe and ceiling leaks to container or floor drain—flow rate of 3.3 gal/min (12.5 L/min).
- Constructed with cinched corners for quick and easy installation.
- Available with high strength magnets for steel rafter attachment, or grommets for bungee or zip tie attachment.



Dimensions		Model No Grommets	Model No Magnets	Ship Wt lb/kg
Product W x L	Folded W x L x H			
5 ft x 5 ft 1.5 m x 1.5 m	18 in x 12 in x 2 in 457 mm x 305 mm x 51 mm	28300	8010-01394-106MAG	7/3
7 ft x 7 ft 2.1 m x 2.1 m	18 in x 16 in x 4 in 457 mm x 406 mm x 102 mm	28304	8010-01395-106MAG	10/5
10 ft x 10 ft 3.0 m x 3.0 m	18 in x 16 in x 6 in 457 mm x 406 mm x 152 mm	28308	8010-01396-106MAG	15/7
12 ft x 12 ft 3.7 m x 3.7 m		28312	8010-01397-106MAG	23/10
15 ft x 15 ft 4.6 m x 4.6 m	18 in x 16 in x 10 in 457 mm x 406 mm x 254 mm	28315	—	35/16
20 ft x 20 ft 6.1 m x 6.1 m	18 in x 16 in x 14 in 457 mm x 406 mm x 356 mm	28318	—	65/30



Hose channels rainwater leaks into floor drain or collection container.

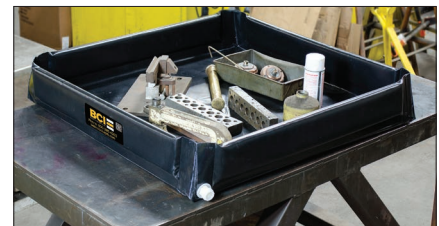
Mini-Berm Flex Tray

Safe, reliable spill containment for tabletop parts cleaning and fluid transfer operations

- Robust geomembrane liner withstands petroleum products and acids.
- Sturdy foam walls and rigid corner supports for strength.
- One-inch NPT drain fitting for convenient emptying.
- Compact, easy to fold and store—utility strap included.



Capacity Gallons/ Liters	Dimensions W x L x H		Model No	Ship Wt lb/kg
	Interior	Folded		
30/114	3 ft x 3 ft x 6 in 0.9 m x 0.9 m x 152 mm	5 in x 50 in x 7 in 127 mm x 1270 mm x 178 mm	2005-01919-026	5/2
55/208	4 ft x 4 ft x 6 in 1.2 m x 1.2 m x 152 mm	5 in x 62 in x 7 in 127 mm x 1575 mm x 178 mm	2005-01918-026	7/3
70/265	4 ft x 5 ft x 6 in 1.2 m x 1.5 m x 152 mm	8 in x 60 in x 8 in 203 mm x 1524 mm x 203 mm	2005-02610-026	12/5
110/416	5 ft x 6 ft x 6 in 1.5 m x 1.8 m x 152 mm	8 in x 62 in x 8 in 203 mm x 1575 mm x 203 mm	2005-01920-026	18/8





Water-Filled Boom Diverters

Divert and control fluid for easy cleanup or recovery

- Use for storm water management, portable washdown/pressure washing diversion, and spill diversion.
- Flexible PVC film construction conforms to uneven surfaces forming a diversionary barrier away from storm drains or as a holding area for wet vacuum operations.



Product W x L	Dimensions Folded W x L x H	Model No	Ship Wt lb/kg
9 in x 5 ft 229 mm x 1.5 m	6 in x 12 in x 3 in 152 mm x 305 mm x 76 mm	8011-00881-005	2/1
9 in x 10 ft 229 mm x 3.0 m	6 in x 14 in x 4 in 152 mm x 356 mm x 102 mm	8011-00881-010	3/1
9 in x 25 ft 229 mm x 7.6 m	10 in x 18 in x 6 in 254 mm x 457 mm x 152 mm	8011-00881-025	6/3
9 in x 50 ft 229 mm x 15.2 m	10 in x 18 in x 6 in 254 mm x 457 mm x 152 mm	8011-00881-050	12/5



Water-Filled Drain Covers

Ensure compliance to storm water regulations and prevent run-off pollutants from entering drains

- Seal drains before washdowns, maintenance, or other clean up tasks to prevent contaminants from going into water systems.
- Easy-fill push plug accepts standard water hose—do not fill over 5-in (127-mm) high.
- Long lasting, durable geomembrane liner resists damage from UV rays.



Product W x L	Dimensions Folded W x L x H	Model No	Ship Wt lb/kg
30 in x 30 in 762 mm x 762 mm	15 in x 15 in x 3 in 381 mm x 381 mm x 76 mm	8005-00525-107	5/2
42 in x 42 in 1067 mm x 1067 mm	16 in x 18 in x 4 in 406 mm x 457 mm x 102 mm	8005-00526-107	10/5
42 in x 66 in 1067 mm x 1676 mm	16 in x 18 in x 6 in 406 mm x 457 mm x 152 mm	8005-00527-107	13/6
58 in x 58 in 1473 mm x 1473 mm	29 in x 29 in x 5 in 737 mm x 737 mm x 127 mm	8005-00528-107	16/7



Waterproof Tarps

Protect drums and equipment to avoid contamination or damage

- Waterproof geomembrane liner vinyl coated fabric provides protection from direct sunlight, sand, dust, and rain.
- Brass grommets in corners offer a convenient way to secure the tarp in place.
- Use under berms for extra puncture- and wear-resistance.



Product W x L	Dimensions Folded W x L x H	Model No	Ship Wt lb/kg
5 ft x 5 ft 1.5 m x 1.5 m	18 in x 16 in x 6 in 457 mm x 406 mm x 152 mm	5003-02607-108	6/3
5 ft x 10 ft 1.5 m x 3.0 m		5003-02608-108	8/4
10 ft x 10 ft 3.0 m x 3.0 m		5003-02284-108	15/7
10 ft x 12 ft 3.0 m x 3.7 m		5003-00407-108	20/9
10 ft x 20 ft 3.0 m x 6.1 m	18 in x 16 in x 14 in 457 mm x 406 mm x 356 mm	5003-00543-108	30/14



Absorbent Spill Kits

Be prepared to respond to spills anywhere

Duffle Bag Spill Kits

Kit includes:

- (30) 15 x 18 in (381 x 457 mm) pads
- (5) 3 in x 4 ft (75 mm x 1 m) socks
- (4) 10 x 10 in (254 x 254 mm) pillows
- (5) Disposal bags
- (1) Emergency response book

Model No

- Universal Duffle Spill Kit 905-108 (Shown)
- Oil-Only Duffel Spill Kit 905-109
- Hazmat Duffle Spill Kit 905-110



Truck Spill Kits

Kit includes:

- (20) 15 x 18 in (381 x 457 mm) pads
- (3) 3 in x 4 ft (75 mm x 1 m) socks
- (2) Disposal bags
- (1) Pair of nitrile gloves
- (1) Pair of safety goggles
- (1) Dust mask

Model No

- Universal Truck Spill Kit 905-111
- Oil-Only Truck Spill Kit 905-112
- Hazmat Truck Spill Kit 905-113 (Shown)



5 Gallon Spill Kits

Kit includes:

- (10) 15 x 18 in (381 x 457 mm) pads
- (2) 3 in x 4 ft (75 mm x 1 m) socks
- (1) Disposal bag
- (1) Pair of safety goggles

Model No

- Universal 5 Gallon Spill Kit 905-114 (Shown)
- Oil-Only 5 Gallon Spill Kit 905-115
- Hazmat 5 Gallon Spill Kit 905-116



20 Gallon Spill Kits

Meets UN certification 1H2/X75/S, 1H2/Y100/S, 1H2/X100/S

Kit includes:

- (25) 15 x 18 in (381 x 457 mm) pads
- (4) 3 in x 4 ft (75 mm x 1 m) socks
- (2) 10 x 10 in (254 x 254 mm) pillows
- (1) Pair of disposable gloves
- (1) Pair of safety goggles
- (1) Shovel
- (1) Disposable bag
- (1) Emergency response book

Model No

- Universal 20 Gallon Spill Kit 905-117
- Oil-Only 20 Gallon Spill Kit 905-118 (Shown)
- Hazmat 20 Gallon Spill Kit 905-119



50 Gallon Wheeled Spill Kits

Meets UN certification 1H2/X125/S, 1H2/X113/S

Kit includes:

- (50) 15 x 18 in (381 x 457 mm) pads
- (50) 12 x 13 in (305 x 330 mm) wipes
- (5) 3 in x 4 ft (76 mm x 1 m) socks
- (5) 3 in x 10 ft (76 mm x 3 m) socks
- (4) 10 x 10 in (254 x 254 mm) pillows
- (5) Disposable bags
- (1) Emergency response book

Model No

- Universal 50 Gallon Wheeled Spill Kit 905-129
- Oil-Only 50 Gallon Wheeled Spill Kit 905-130
- Hazmat 50 Gallon Wheeled Spill Kit 905-131 (Shown)
- (Non-wheeled kits also available)



95 Gallon Wheeled Spill Kits

Meets UN certification 1H2/X125/S, 1H2/X113/S

Kit includes:

- (100) 15 x 18 in (381 x 457 mm) pads
- (10) 10 x 10 in (254 x 254 mm) pillows
- (4) 5 in x 10 ft (127 mm x 3 m) booms
- (1) Pair of disposable gloves
- (1) Pair of safety goggles
- (1) Disposable bag

Model No

- Universal 95 Gallon Wheeled Spill Kit 905-126
- Oil-Only 95 Gallon Wheeled Spill Kit 905-127 (Shown)
- Hazmat 95 Gallon Wheeled Spill Kit 905-128
- (Non-wheeled spill kits also available)





Absorbents provide workplace safety and ensure environmental preservation



A Universal Absorbents Ideal for controlling everyday leaks and spills whether it's oil- or water-based liquids.

Bonded Pads and Rolls

- Dimpled surface quickly soaks up liquids around leaky pipes and equipment
- Ultrasonic bonded polypropylene provides increased tensile strength

Industrial Rugs and Rolls

- Use on heavy traffic aisles and walkways next to leaky machinery
- Rugged design wicks liquids into the meltblown core keeping areas dry and safe

B Oil-Only Absorbents Provide fast, effective clean-up of oil spills on land or water—absorbs oil, not water

Meltblown Pads and Rolls

- Absorbs small spills, leaks, and drips of oil-based liquids keeping work areas clean and safe
- Meltblown polypropylene design offers the most economical liquid control

Bonded Pads and Rolls

- Ideal for wiping applications or for rolling out in front of messy machinery
- Ultrasonic bond points provide increased tensile strength

C Hazmat Absorbents Soak up aggressive acids, bases and unknown oil or water-based liquids—highly visible color quickly identifies hazardous conditions

- **Pads** low-profile design permits easy wipe down of contaminated areas and small spill clean up
- **Rolls** cover larger benchtop or floor areas for a clean, dry surface
- **Socks** offer rapid absorption and flexible design—surrounding large hazardous spills preventing spreading
- **Pillows** high-capacity wide surface area provides greater absorbency for large spills

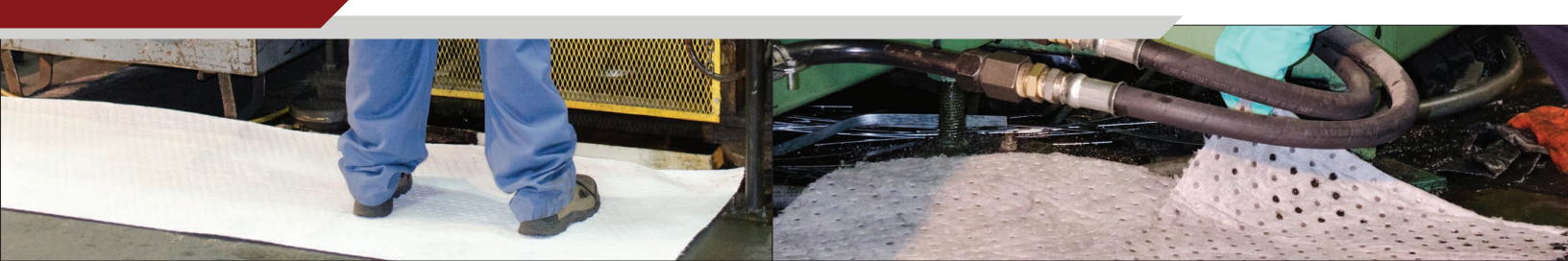
D Universal Socks & Pillows Fast-wicking power for lubricants, coolants, solvents or water-based spills

- **Socks** form around leaky equipment bases, keeping floors clean and safe
- **Pillows** high capacity design catches drips and leaks in tight spaces between machinery

D Oil-Only Socks, Pillows, Booms Use indoors or outdoors on waterborne spills—absorbs oil and repels water

- **Socks** wrap around leaky equipment, soaking up oil while repelling rainwater
- **Pillows** soak up oil in ponds, basins, and tanks and catch leaks and drips from valves and equipment
- **Booms** sock and netting design are non-toxic, non-shedding, and include rope and snap clips for linking when deployed





Description	Weight Type	Nominal Dimensions W x D	Absorbency Capacity Gal (L)	No of Pieces	Part No Bag	Part No Dispenser Box	Ship Wt Lbs (Kgs)
-------------	-------------	--------------------------	-----------------------------	--------------	-------------	-----------------------	-------------------

A Universal Pads & Rolls

Bonded Universal Pads	Heavy	15 x 18 in (381 x 457 mm)	23 (85)	100	905-001	905-002	10 (5)
	Medium		19 (72)		905-003	905-004	9 (4)
	Light		27 (102)	200	905-005	905-006	13 (6)
Bonded Universal Rolls	Heavy	30 in x 150 ft (762 mm x 46 m)	47 (179)	1	905-007	—	21 (10)
	Medium		41 (153)		905-008		18 (8)
Bonded Universal Drum Top Pads	—	22" dia (559 mm)	13 (51)	25	905-041		6 (3)
Bonded Universal Split Rolls	Heavy	15 in x 150 ft (381 mm x 46 m)	47 (179)	2	905-009		21 (10)
	Medium		41 (153)		905-011		18 (8)
Bonded Universal Split Roll	Heavy	36 in x 150 ft (914 mm x 46 m)	24 (89)	1	—	905-010	11 (5)
Universal Industrial Rug			90 (341)		905-032	—	40 (18)
Universal Military Rolls			47 (179)	2	905-034		21 (10)
Universal Military Split Rolls					905-035		

B Oil-Only Pads & Rolls

Meltblown Oil-Only Pads	Heavy	15 x 18 in (381 x 457 mm)	23 (85)	100	905-042	905-043	10 (5)
	Light		15 (55)		905-046	905-047	7 (3)
Meltblown Oil-Only Rolls	Heavy	30 in x 150 ft (762 mm x 46 m)	47 (179)	1	905-050	—	21 (10)
Meltblown Oil-Only Split Rolls		15 in x 150 ft (381 mm x 46 m)	41 (153)	2	905-052		18 (8)
Meltblown Oil-Only Split Roll	Medium			24 (89)	1	905-054	905-053
Bonded Oil-Only Pads	Heavy	15 x 18 in (381 x 457 mm)	23 (85)	100	905-055	905-056	10 (5)
	Light		15 (55)		905-059	905-060	7 (3)
Bonded Oil-Only Rolls	Heavy	30 in x 150 ft (762 mm x 46 m)	47 (179)	1	905-063	—	21 (10)
Bonded Oil-Only Split Rolls		15 in x 150 ft (381 mm x 46 m)		2	905-065		
			24 (89)	1	—	905-066	11 (5)

C Hazmat Pads & Rolls

Hazmat Pads	Heavy	15 x 18 in (381 x 457 mm)	23 (85)	100	905-097	905-098	10 (5)
	Light		27 (102)	200	905-099	905-100	12 (5)
Hazmat Rolls	Heavy	30 in x 150 ft (762 mm x 46 m)	47 (179)	1	905-101	—	21 (10)
Hazmat Split Rolls		15 in x 150 ft (381 mm x 46 m)		2	905-102		
			24 (89)	1	—	905-103	11 (5)

D Hazmat/Universal/Oil-Only Socks Pillows & Booms

Hazmat Socks	—	3 in x 4 ft (76 mm x 1 m)	16 (60)	12	—	905-104	11 (5)
		3 in x 10 ft (76 mm x 3 m)	19 (71)	4		905-105	13 (6)
Hazmat Pillows		18 x 24 in (457 x 610 mm)	23 (85)	10		905-106	15 (7)
		16 x 18 in (406 x 457 mm)	38 (142)	17		905-107	25 (11)
Universal Socks		3 in x 4 ft (76 mm x 1 m)	53 (199)	40		905-037	35 (16)
		3 in x 10 ft (76 mm x 3 m)	65 (244)	15		905-038	43 (20)
Universal Pillows		11 x 13 in (279 x 330 mm)	18 (68)	16		905-039	12 (5)
		10 x 10 in (254 x 254 mm)	30 (114)	40		905-040	20 (9)
Oil-Only Socks		3 in x 4 ft (76 mm x 1 m)	16 (60)	12		905-093	11 (5)
		3 in x 10 ft (76 mm x 3 m)	19 (71)	4		905-094	13 (6)
Oil-Only Pillows		10 x 10 in (254 x 254 mm)	30 (114)	40		905-095	20 (9)
Oil-Only Booms		5 in x 10 ft (127 mm x 3 m)	27 (102)	4	905-091	—	18 (8)
		8 in x 10 ft (203 mm x 3 m)	60 (227)		905-092		40 (18)



Accumulation Centers and Ramp

Combine units to create your own customized spill-control system

Low-profile centers only measure 5½-in (140-mm) high for easy handling of drums. Made with 100% recycled polyethylene, these accumulation centers are nearly impervious to chemicals, including acids and corrosives. Seamless construction eliminates leaks, making them ideal for drum filling and dispensing operations. Self-locating grates won't ride up, and are removable for easy cleaning. Combine 2-, 4-, 6-, and 8-drum modular units to create your own customized system. Use the optional joining clips to firmly lock units together. Sumps remain separate and clips can be removed for easy repositioning. The 6- and 8-drum center models are EPA compliant, support SPCC, and meet NFPA 1 2009 edition and IFC fire codes.

Use optional Sump-to-Sump™ drain kit (includes joining clips and transfer tube) for applications requiring a continuous sump. Kit allows you to join centers together, on-site, for full compliance with regulations when sump capacities reach 71-gal (270-L). Kit includes one pair stainless steel joining clips, one pair rubber grommets, one polytetrafluoroethylene (PTFE) transfer tube. (Patent No US 6,622,879,B1)

Companion Ramp

Load and unload heavy drums with ease. Anti-skid ribs provide maximum safety. Place the ramp anywhere on accumulation centers size 2-drum or larger.



Description	Sump Capacity	Load-bearing Capacity	External Dim. W x D x H	Compliance¹	Model No	Ship Wt
1-drum center	12 gal 45 L	1250 lbs 567 kg	25 in x 25 in x 5.5 in 635 mm x 635 mm x 140 mm	—	9008-03001-802	17 lbs 8 kg
2-drum center	24 gal 90 L	2500 lbs 1134 kg	49 in x 25 in x 5.5 in 1245 mm x 635 mm x 140 mm		9008-03002-802	32 lbs 15 kg
4-drum center	49 gal 185 L	5000 lbs 2268 kg	49 in x 49 in x 5.5 in 1245 mm x 1245 mm x 140 mm		9008-03003-802	61 lbs 28 kg
6-drum center	73 gal 276 L	7500 lbs 3402 kg	73 in x 49 in x 5.5 in 1854 mm x 1245 mm x 140 mm	E,S,O	9008-03004-802	91 lbs 41 kg
8-drum center	98 gal 371 L	10,000 lbs 4536 kg	97 in x 49 in x 5.5 in 2464 mm x 1245 mm x 140 mm		9008-03005-802	122 lbs 55 kg
Ramp for above	—	1000 lbs 455 kg	48 in x 33 in x 6.25 in 1219 mm x 838 mm x 159 mm	—	9012-03123-802	41 lbs 19 kg
Joining clips, one pair, stainless steel		—	4 in x 2 in 102 mm x 51 mm		9008-03216	1 lb 0.5 kg
Sump-to-Sump™ drain kit			—		9008-03217	

¹For Approval and Compliance Key, see page 3.



Spill Control Pallets

Keep workers safe from accidental slips indoors and avoid costly hazmat cleanup costs

- Protect against ground contamination.
- Comply with EPA and avoid potential fines.

Made of molded 100% recycled polyethylene, these pallets resist chemical attack from hazardous acids, caustics and solvents. The oversized sump holds the contents of up to a 55-gal (200-L) drum in the event of leak or rupture – meeting or exceeding the most stringent spill containment regulations. Seamless construction eliminates leaks. Self-locating grates lift off for quick cleanup. Black color hides grime and dirt to keep your workplace looking clean. Choose from square or in-line configurations. EPA compliant, supports SPCC, and meets NFPA 1 2009 edition and IFC fire codes.



Description	Sump Capacity	Load-bearing Capacity	External Dim. W x D x H	Compliance†	Model No	Ship Wt
2-drum in-line pallet w/drain	66 gal 250 L	2500 lbs 1134 kg	49 in x 25 in x 18 in 1245 mm x 635 mm x 457 mm	E,S,O	9007-03115-802	44 lbs 20 kg
2-drum in-line pallet					9007-03116-802	
3-drum in-line pallet w/drain	75 gal 284 L	3750 lbs 1701 kg	73 in x 25 in x 11.625 in 1854 mm x 635 mm x 295 mm		9007-03117-802	58 lbs 26 kg
3-drum in-line pallet					9007-03118-802	
4-drum square pallet w/drain	73 gal 276 L	5000 lbs 2268 kg	49 in x 49 in x 10.25 in 1245 mm x 1245 mm x 260 mm		9007-03119-802	70 lbs 32 kg
4-drum in-line pallet	75 gal 284 L		97 in x 25 in x 9 in 2464 mm x 635 mm x 229 mm		9007-03120-802	77 lbs 35 kg
4-drum square pallet	73 gal 276 L		49 in x 49 in x 10.25 in 1245 mm x 1245 mm x 260 mm		9007-03121-802	70 lbs 32 kg
4-drum in-line pallet w/drain	75 gal 284 L		97 in x 25 in x 9 in 2464 mm x 635 mm x 229 mm		9007-03112-802	77 lbs 35 kg
Ramp for 4-drum square pallet	—	1000 lbs 454 kg	49 in x 33 in x 10.5 in 1245 mm x 838 mm x 267 mm	—	9012-03124-802	40 lbs 18 kg

Replacement Grates (100% recycled)

2-drum grate for all sizes above	—	—	24 in x 48 in x 2.5 in 610 mm x 1219 mm x 63 mm	—	9007-03107-802	16 lbs 7 kg
1-drum grate for 3-drum in-line					9007-03106-802	8 lbs 4 kg

†For Approval and Compliance Key, see page 3.



IBC Pallet and Shed

Reliable spill protection and safe storage for IBCs

- Compliant storage for popular 275- or 330-gal (1000- or 1250-liter) IBCs.
- Compact footprint with ergonomic working height.

Constructed of durable 40% recycled polyethylene, these intermediate bulk container pallets offer excellent chemical resistance. They accept IBCs up to 48-in W x 48-in D x 53-in H (1219-mm W x 1219-mm D x 1346-mm H). Large leakproof sump exceeds regulations and protects against high-volume spills.

Sturdy pillar supports accept up to 9,000-lb (4082-kg) uniformly distributed load.

Removable pillars make for easy sump cleanup. Pallet features forklift pockets for relocation when empty. Ships fully assembled.

EPA compliant, supports SPCC, and meets OSHA.



Description	Recycled Content	Sump Capacity	Load-bearing Capacity	External Dim. W x D x H	Compliance [†]	Model No	Ship Wt
IBC indoor pallet	40%	372 gal 1408 L	9000 lbs 4082 kg	55 in x 55 in x 37.5 in 1397 mm x 1397 mm x 952 mm	E,S,O	9007-03122-802	357 lbs 162 kg
IBC outdoor shed w/pallet				60.75 in x 68.5 in x 103.75 in 1543 mm x 1740 mm x 2635 mm		9010-03109-801	621 lbs 282 kg

[†]For Approval and Compliance Key, see page 3.



DrumSheds™

Safe, secure, and compliant outdoor storage for drums

Weather-resistant DrumSheds™ are made of eco-friendly, 50% recycled polyethylene. Convenient roll-top doors allow access from front or rear. A wide, 52-in (1321-mm) door opening accepts palletized loads. Fully compliant, leakproof pallet sump has removable, durable deck grating for easy cleanup of spills. A spacious interior offers ample headroom for adding funnels or pumps. Safety features include grounding capability, integral anchor bolt locations for wind resistance, and molded lugs to accept padlocks for security. Forklift pockets at the front and back make it easy to relocate empty sheds. Ships fully assembled. Pallets (without shed) also available.

Low Line Pallets (without shed) also available. Two-drum and 4-drum sizes feature ergonomic, low 9-in (229-mm) working height.

EPA compliant, supports SPCC, and meets OSHA.



Description	Recycled Content	Sump Capacity	Load-bearing Capacity	External Dim. W x D x H	Compliance†	Model No	Ship Wt
2-drum DrumShed™	50%	67 gal 254 L	2500 lbs 1134 kg	60.75 in x 58.5 in x 75.25 in 1543 mm x 1486 mm x 1911 mm	E,S,O	9010-03097-801	292 lbs 133 kg
4-drum DrumShed™		79 gal 301 L	5000 lbs 2268 kg	60.75 in x 68.5 in x 75.25 in 1543 mm x 1740 mm x 1911 mm		9010-03098-801	343 lbs 156 kg
Ramp - Black	100% -Black	—	1000 lbs 455 kg	48 in x 59.75 in x 11.25 in 1219 mm x 1518 mm x 286 mm	—	9012-03125-802	65 lbs 30 kg
Ramp - Yellow	0% - Yellow					9012-03126-801	
Low Line Pallet - 2 drum	100%	67 gal 254 L	2500 lbs 1134 kg	55 in x 45 in x 9 in 1397 mm x 1143 mm x 229 mm	E,S,O	9007-03113-802	68 lbs 31 kg
Low Line Pallet - 4 drum		79 gal 301 L	5000 lbs 2268 kg	55 in x 55 in x 9 in 1397 mm x 1397 mm x 229 mm		9007-03114-802	89 lbs 40 kg

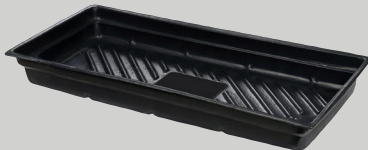
†For Approval and Compliance Key, see page 3.



Spill Trays

Lightweight and low-profile design for small-scale spill control

Made of 100% recycled polyethylene, these eco-friendly spill trays will not rust or corrode. Raised rib bottom adds rigidity and keeps contents out of spills—perfect for pouring and filling applications. Rated for service temperatures between -30° to 120°F (-34 to 49°C).



Sump Capacity	External Dim. W x D x H	Compliance	Model No	Ship Wt
12 gal 45 L	46 in x 16 in x 5.5 in 1168 mm x 406 mm x 139 mm	—	9015-03143-802	5 lbs 2 kg
20 gal 75 L	38 in x 26 in x 5.5 in 965 mm x 660 mm x 139 mm		9015-03141-802	
	47.50 in x 23 in x 5.5 in 1206 mm x 603 mm x 139 mm		9015-03145-802	6 lbs 3 kg
23 gal 87 L	37.75 in x 34 in x 5.5 in 959 mm x 867 mm x 139 mm		9015-03142-802	
29 gal 109 L	47 in x 33 in x 5.5 in 1194 mm x 838 mm x 139 mm		9015-03144-802	8 lbs 4 kg



Aerosolv® Aerosol Can Disposal System

Safely recycle aerosol cans while reducing disposal costs and minimizing waste

- Save thousands of dollars on hazardous waste disposal costs.
- Turn aerosol cans into recyclable steel – save on landfill space for a cleaner environment.



The Aerosolv® system safely converts spent aerosol cans from solid hazardous waste to a non-hazardous material. It accepts industry standard sized cans with a maximum height of 8½-in (215-mm) and threads directly into a standard 2-in (51-mm) bung on a 30- (110-L) or 55-gal (200-L) drum. Body is made of low-maintenance aluminum and all moving parts are 308 stainless steel.

A non-sparking pin punctures the can, and the residual liquids flow into the collection drum. One 55-gal (200-L) drum holds approximately 4,200 spent aerosol cans. Punctured, discharged cans do not meet the definition of hazardous waste per EPA 40 CFR 261.23(a)(6), and thus can be treated as recyclable scrap metal.

System includes a combination filter, safety goggles, and an anti-static ground wire with alligator clip. EPA compliant. Replacement filters are available in either color-changing style or economical, noncolor-changing style.

Description	Shipping Dim. W x D x H	Compliance†	Model No	Ship Wt
Aerosolv®	18 in x 18 in x 7 in 457 mm x 457 mm x 178 mm	E	9009-03099-806	12 lbs 5 kg

†For Approval and Compliance Key, see page 3.

Aerosolv® Super System

Certified by the EPA's Environmental Technology Verification Program (ETV)

- Built-in counter tracks number of cans punctured.
- Protective coating for easy cleaning.



Aerosolv® Super System offers all the features of the original Aerosolv® system, plus greater vapor reduction, easy tracking, and added security. Lockout and shut-off mechanism seals the system and drum when not in use to eliminate the escape of hazardous vapors to meet OSHA requirements. Easily comply with your ISO 14001 program using the built-in counter. Includes a combination coalescing/saturation indicating carbon filter, a padlock with key, anti-static ground wire with C-clamp, and safety goggles.

EPA compliant and ETV certified.

Description	Shipping Dim. W x D x H	Compliance†	Model No	Ship Wt
Aerosolv® Super System with Counter	18 in x 18 in x 7 in 457 mm x 457 mm x 178 mm	E,V	9009-03100-806	12 lbs 5 kg

†For Approval and Compliance Key, see page 3.



Classic Sure-Grip® EX Safety Cabinets

For safe, dependable flammable liquid storage and protection

- Extra safe, extra secure—fire resistant design meets NFPA 30 and OSHA regulations for the compliant storage of flammables.
- Independently fire tested and approved by FM Global.
- Double-wall construction with 1-1/2-in (38-mm) insulating air space.
- Sturdy 18-gauge (1-mm) steel, welded for strength and greater fire protection—quality is backed by an industry first Ten-Year Warranty.
- Three-point, stainless steel bullet self-latching system for optimum longevity and increased heat resistance.
- Patented SpillSlope® shelves direct spills to back and bottom sump—adjustable on 3-in (76-mm) centers.
- Exclusive U-Loc™ handle includes two keys and accepts an optional padlock for convenience and security.
- Exclusive Haz-Alert™ reflective warning labels.
- 2-in (51mm) leakproof sump captures spills.
- Dual 2-in (51-mm) vents with flame arresters.
- Built-in grounding connector prevents static buildup.
- Self-close style doors feature fusible links to hold doors open—patented, concealed self-close mechanism provides obstruction-free access to top shelf space.
- Durable lead-free powder paint finish, inside-and-out, for maximum chemical resistance.





Capacity	Number of Doors and Style	Dimensions H x W x D		Adjustable Shelves	Sump Capacity	Approv/Lstg [†] Regulation	Model No	Ship Wt
		Exterior	Interior					
30 gal 114 L	2-door, manual	44 in x 43 in x 18 in 1118 mm x 109 mm x 457 mm	39.56 in x 39.5 in x 14.56 in 1006 mm x 1003 mm x 370 mm	1	5.2 gal 19.7 L	FM,N,O,A	9005-03019-801	231 lbs 105 kg
	2-door, self-close					FM,N,O,A,I	9005-03024-801	238 lbs 108 kg
45 gal 170 L	2-door, manual	65 in x 43 in x 18 in 1651 mm x 1092 mm x 457 mm	60.5 in x 39.5 in x 14.56 in 1537 mm x 1003 mm x 370 mm	2	8.3 gal 31.5 L	FM,N,O,A	9005-03025-801	311 lbs 141 kg
	2-door, self-close					FM,N,O,A,I	9005-03026-801	313 lbs 142 kg
60 gal 227 L	2-door, manual	65 in x 34 in x 34 in 1651 mm x 864 mm x 864 mm	60.5 in x 30.75 in x 30.31 in 1537 mm x 781 mm x 771 mm			FM,N,O,A	9005-03027-801	388 lbs 176 kg
	2-door, self-close					FM,N,O,A,I	9005-03028-801	392 lbs 178 kg
90 gal* 341 L*	2-door, manual	65 in x 43 in x 34 in 1651 mm x 1092 mm x 864 mm	60.5 in x 39.5 in x 30.31 in 1537 mm x 1003 mm x 771 mm		10.7 gal 40.6 L	FM,N,O,A	9005-03029-801	481 lbs 218 kg
	2-door, self-close					FM,N,O,A,I	9005-03030-801	

*OSHA 29CFR 1910.106(d)(3) states that not more than 60 gallons (227L) of Category 1, 2, or 3 flammable liquids, nor more than 120 gallons (454L) of Category 4 flammable liquids may be stored in a safety cabinet.

[†]For Approval and Compliance Key, see page 3.

Description	Dimensions W x D	Fits Cabinet Sizes	Model No	Ship Wt
Steel shelf	39.375 in x 14 in 1000 mm x 356 mm	30 & 45 gal-43 in W 1092 mm	9014-03129-808	10 lbs 5 kg
	30.375 in x 29 in 771 mm x 737 mm	60 gal-34 in W 864 mm	9015-03131-809	16 lbs 7 kg
	39.375 in x 29 in 1000 mm x 737 mm	90 gal-43 in W 1092 mm	9015-03132-809	21 lbs 9 kg



Slimline Safety Cabinet

Gain valuable storage space even when space is tight

Use alone or alongside larger cabinets for expanded storage when floor space is limited. The standard Slimline cabinet is 18-in (457-mm) deep and only 23¼-in (591-mm) wide. It fits flush alongside a 45-gallon (170-L) cabinet.

The Slimline safety cabinet has all the same features as the larger safety cabinets such as a three-point, self-latching door with self-latching handle; a 2-in (51-mm) leakproof sump; dual vents; a grounding wire connector; and a large trilingual warning label to identify contents. The cabinet includes three spill-catching galvanized steel shelves that direct spills to back and bottom into a leakproof sump.

Capacity	Number of Doors and Style	Dimensions H x W x D		Adjustable Shelves	Approv/Lstg [†] Regulation	Model No	Ship Wt
		Exterior	Interior				
22 gal 83 L (standard)	1-door, manual	65 in x 23.25 in x 18 in 1651 mm x 591 mm x 457 mm	60.5 in x 20 in x 14.56 in 1537 mm x 508 mm x 370 mm	3	FM,N,O,A	9005-03031-801	198 lbs 90 kg

[†]For Approval and Compliance Key, see page 3.

Wall-Mount Safety Cabinet

Make the most of usable storage space—hang cabinet above workbench for easy access

Gain storage space near work areas without taking up extra floor space. Eye-level positioning allows for easy access to solvents. Five adjustable shelves accommodate multiple containers. Mounting hardware is included.



Capacity	Number of Doors and Style	Dimensions H x W x D		Adjustable Shelves	Approv/Lstg [†] Regulation	Model No	Ship Wt
		Exterior	Interior				
20 gal 76 L	2-door, manual	44 in x 43 in x 12 in 1118 mm x 1092 mm x 305 mm	39.56 in x 39.5 in x 8.75 in 1006 mm x 1003 mm x 222 mm	3	FM,N,O,A	9005-03034-801	205 lbs 93 kg

[†]For Approval and Compliance Key, see page 3.

Undercounter Safety Cabinets

Conveniently locate liquids near work areas

Take advantage of undercounter space to store flammable liquids safely. Each cabinet is sized and fitted with a 3½-in H x 2 ½-in D (89-mm x 64-mm) kickplate to mount flush with other cabinets. Dual vents with flash arresters on the back wall provide an easy connection if you need ventilation. Self-leveling feet adjust to 1-1/8-in (29-mm) for alignment on uneven floors.



Capacity	Number of Doors and Style	Dimensions H x W x D		Adjustable Shelves	Approv/Lstg [†] Regulation	Model No	Ship Wt
		Exterior	Interior				
22 gal 83 L	2-door, manual	35 in x 35 in x 22 in 889 mm x 889 mm x 559 mm	27.31 in x 31.75 in x 18.75 in 695 mm x 806 mm x 476 mm	1	FM,N,O,A	9005-03032-801	190 lbs 86 kg
	2-door, self-close				FM,N,O,A,I	9005-03033-801	205 lbs 93 kg

[†]For Approval and Compliance Key, see page 3.

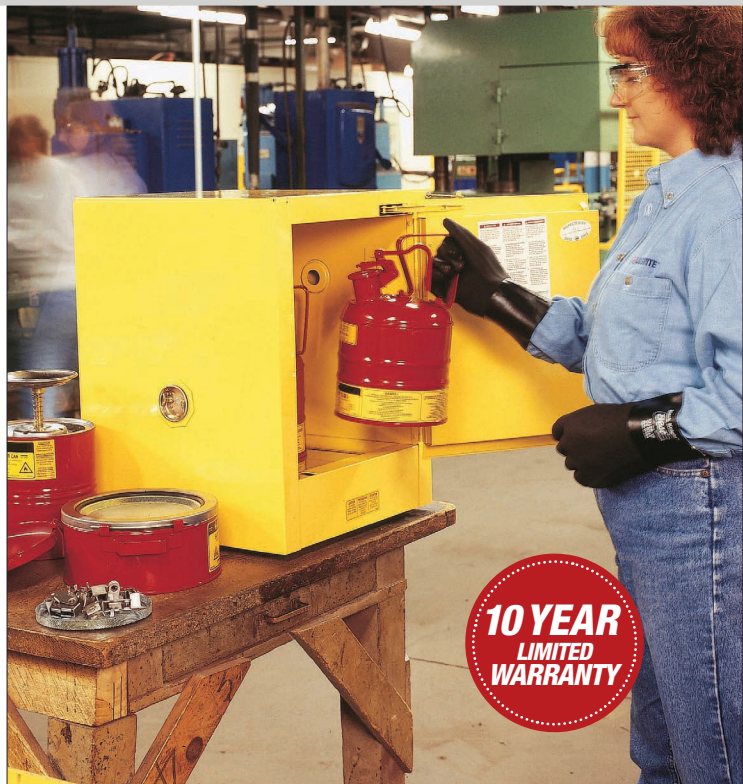
Countertop and Compac Safety Cabinets

***Store flammables safely,
even when space is at
a minimum***

These cabinets are ideal for storing small quantities of flammable liquids at a workstation or for expanding existing storage.

Countertop Safety Cabinets increase access to frequently used liquids, without compromising safety. They're easily portable, so you can be flexible with your work areas. Use an optional wall hanger assembly for wall mounting.

Compac Safety Cabinets fit almost anywhere and provide protection, even where space is at a premium. Only 23¼-in (591-mm) wide, they hold 12-gal (45-L) of flammables.



Capacity	Number of Doors and Style	Dimensions H x W x D		Adjustable Shelves	Approv/Lstg† Regulation	Model No	Ship Wt
		Exterior	Interior				
4 gal 15 L	Countertop; 1-door, manual	22 in x 17 in x 17 in 559 mm x 432 mm x 432 mm	18.5 in x 13.75 in x 13.75 in 470 mm x 349 mm x 349 mm	1	N,O,A	9005-03022-801	62 lbs 28 kg
	Countertop; 1-door, self-close				N,O,A,I	9005-03023-801	
12 gal 45 L	Compac; 1-door, manual	35 in x 23.25 in x 18 in 889 mm x 591 mm x 457 mm	30.5 in x 20 in x 14.56 in 775 mm x 508 mm x 370 mm		FM,N,O,A	9005-03020-801	130 lbs 59 kg
	Compac; 1-door, self-close				FM,N,O,A,I	9005-03021-801	

[†]For Approval and Compliance Key, see page 3.

Aerosol Can Benchtop Safety Cabinet

***Safe, dependable flammable liquid storage
and protection***

- Compliant storage for up to 28 aerosol cans.
- Compact footprint with sturdy construction.

This safety cabinet fits virtually anywhere for hassle-free organization. Constructed of sturdy, double-wall, 18-gauge (1-mm) welded steel, it has 1½-in (38-mm) of insulating air space. Features two 24-gauge galvanized steel roll-out shelves with “easy-glide” plastic rollers and stop guard protection. The two fixed-height position shelves have 12, 2¾-in (70-mm) diameter openings, accepting cans up to 10-in (254-mm) tall, and are removable for easy cleaning.

Flush-mounted paddle handle comes with cylinder lock and keys and also accommodates padlock for extra security. Cabinet is finished inside and out with a durable, lead-free, hybrid epoxy/polyester powder-coat finish for excellent chemical resistance. Ten-year warranty. Meets NFPA Code 30 and OSHA regulations.



Description and Capacity	Dimensions H x W x D	Roll-Out Drawers	Approv/Lstg [†] Regulation*	Model No	Ship Wt
Benchtop safety cabinet for 28 cans	27 in x 21 in x 18 in 686 mm x 533 mm x 457 mm	2	N,O,A	9005-03017-801	97 lbs 44 kg

[†]For Approval and Compliance Key, see page 3.



Safety Cabinets for Combustibles

Reliable, durable storage for aerosols and liquids

- Separate and identify Class III combustibles.
- Accommodates small cans found in printing, painting, furniture and automotive operations.

Cabinet is constructed of sturdy 18-gauge (1-mm) thick, double-wall steel with 1½-in (38-mm) of insulating air space. High-performance, self-latching doors close easily and securely for maximum fire protection. Fusible links hold doors open and melt at 165°F (74°C) to close doors under fire conditions.

Locking mechanism with three-point stainless steel bullet latch and double key set secures contents. Paddle handle accepts an optional padlock.

Shelves slope slightly and direct spills toward the back of the cabinet and away from the user. Shelves adjust on 3-in (76-mm) centers. Cabinet also features a leakproof 2-in (51-mm) sump; dual vents with flame arresters; and four adjustable self-leveling feet. Durable lead-free epoxy/polyester powder-coat finish provides excellent chemical resistance.

FM-approved. OSHA and NFPA compliant. Ten-year warranty.



Capacity	Number of Doors and Style	Dimensions H x W x D		Adjustable Shelves	Approv/Lstg [†] Regulation	Model No	Ship Wt
		Exterior	Interior				
40 gal 151 L	2-door, manual	44 in x 43 in x 18 in 1118 mm x 1092 mm x 457 mm	39.56 in x 39.5 in x 14.56 in 1006 mm x 1003 mm x 370 mm	3	FM,N,O,A	9005-03006-803	238 lbs 108 kg
	2-door, self-close				FM,N,O,A,I	9005-03007-803	254 lbs 115 kg
60 gal 227 L	2-door, manual	65 x 43 x 18 in 1651 x 1092 x 457 mm	—	5	FM, N, O,A	9005-03018-803	303 lbs 137 kg

[†]For Approval and Compliance Key, see page 3.



Hazardous Material Safety Cabinets

Safely store and identify hazardous materials and ensure regulatory compliance

- Includes a packet of 10 chemical/application-specific labels.
- Designed to meet FM, NFPA and IFC standards.

These safety cabinets have the same quality features as the cabinets for flammables. All models are constructed of sturdy 18-gauge (1-mm) thick double-wall, welded steel with 1-1/2-in (38-mm) of insulating air space for fire resistance. Self-latching doors close easily and securely for maximum protection under fire conditions. Self-indexing doors close in sequence to ensure a tight closure from top to bottom. Fail-safe closing mechanism ensures three-point stainless steel bullet latching system works every time. Doors shut and latch automatically when a fusible link melts at 165°F (74°C) under fire conditions.

For added security, the paddle handle comes with a cylinder lock and key set or accepts an optional padlock. Patented galvanized steel shelves direct spills to back and bottom of a leakproof sump. Cabinets also feature dual vents with flame arresters; adjustable self-leveling feet; ground wire connectors; and warning labels.



Capacity	Number of Doors and Style	Dimensions H x W x D		Adjustable Shelves	Approv/ Lstg [†] Regulation	Model No	Ship Wt
		Exterior	Interior				
Classic Safety Cabinets							
30 gal 114 L	2-door, self-close	44 in x 43 in x 18 in 1118 mm x 1092 mm x 457 mm	39.625 in x 39.5 in x 14.56 in 1006 mm x 1003 mm x 370 mm	1	FM,H,A,I	9005-03039-804	240 lbs 109 kg
45 gal 170 L	2-door, self-close	65 in x 43 in x 18 in 1651 mm x 1092 mm x 457 mm	60.5 in x 39.5 in x 14.56 in 1537 mm x 1003 mm x 370 mm	2		9005-03040-804	303 lbs 137 kg
60 gal 227 L	2-door, self-close	65 in x 34 in x 34 in 1651 mm x 864 mm x 864 mm	60.5 in x 30.75 in x 30.34 in 1537 mm x 781 mm x 771 mm			9005-03041-804	370 lbs 168 kg
Countertop Safety Cabinet							
4 gal 15 L	2-door, self-close	22 in x 17 in x 17 in 559 mm x 432 mm x 432 mm	18.5 in x 13.75 in x 13.75 in 470 mm x 349 mm x 349 mm	1	H,A,I	9005-03043-804	69 lbs 31 L
Compac Safety Cabinets							
12 gal 45 L	1-door, self-close	35 in x 23.25 in x 18 in 889 mm x 591 mm x 457 mm	30.5 in x 20 in x 14.56 in 775 mm x 508 mm x 370 mm	1	FM,H,A,I	9005-03044-804	123 lbs 56 L
15 gal 57 L	1-door, self-close	44 in x 23.25 in x 18 in 1118 mm x 591 mm x 457 mm	39.625 in x 20 in x 14.56 in 1006 mm x 508 mm x 370 mm			9005-03045-804	156 lbs 70 L
Slimline Safety Cabinets							
22 gal 83 L (standard)	1-door, self-close	65 in x 23.25 in x 18 in 1651 mm x 591 mm x 457 mm	60.5 in x 20 in x 14.56 in 1537 mm x 508 mm x 370 mm	3	FM,H,A,I	9005-0346-804	211 lbs 96 kg
54 gal 204 L (deep)	1-door, self-close	65 in x 23.25 in x 34 in 1651 mm x 591 mm x 864 mm	60.5 in x 20 in x 30.34 in 1537 mm x 508 mm x 771 mm			9005-03047-804	314 lbs 142 kg
Undercounter Safety Cabinet							
22 gal 83 L	2-door, self-close	35 in x 35 in x 22 in 889 mm x 889 mm x 559 mm	27.375 in x 31.75 in x 18.75 in 695 mm x 806 mm x 476 mm	1	FM,H,A,I	9005-03010-804	197 lbs 89 kg

[†]For Approval and Compliance Key, see page 3.

Hazardous Material Safety Cabinets (Continued)

Thermoplastic coating provides superior protection against harsh acids and corrosive chemicals



These select models are also available with thermoplastic coating on all interior surfaces, which provides superior protection against corrosion from drips and off-gassing from harsh chemicals. Non-porous seam-free surface eliminates the need for corrosion-prone rivets or fasteners and cleans up easily.

The popular 30-gal (114-L) cabinet includes an extra polyethylene work tray that can be placed on top of cabinet for a handy work surface. Non-lined cabinets also include polyethylene trays that sit on top of galvanized steel shelves and a separate polyethylene liner for the bottom sump. Easily remove the liner for quick cleaning of drips and leaks. An all-epoxy, baked-on powder-coat finish, inside and out, provides increased chemical resistance. All cabinets come with a 10-year warranty.

Cabinets are FM-approved, except for 4-gal (15-L) models, and comply with NFPA 1, NFPA 400, and the International Fire Code.



Capacity	Number of Doors and Style	Dimensions H x W x D		Adjustable Shelves	Approv/Lstg [†] Regulation	Model No	Ship Wt
		Exterior	Interior				
Classic Safety Cabinets							
30 gal 114 L	2-door, self-close	44 in x 43 in x 18 in 1118 mm x 1092 mm x 457 mm	39.625 in x 39.5 in x 14.56 in 1006 mm x 1003 mm x 370 mm	1	FM,H,A,I	9005-03008-804	251 lbs 114 kg
45 gal 170 L	2-door, self-close	65 in x 43 in x 18 in 1651 mm x 1092 mm x 457 mm	60.5 in x 39.5 in x 14.56 in 1537 mm x 1003 mm x 370 mm	2		9005-03009-804	322 lbs 146.1 kg
60 gal 227 L	2-door, self-close	65 in x 34 in x 34 in 1651 mm x 864 mm x 864 mm	60.5 in x 30.75 in x 30.34 in 1537 mm x 781 mm x 771 mm			9005-03042-804	400 lbs 181 kg
Countertop Safety Cabinet							
4 gal 15 L	2-door, self-close	22 in x 17 in x 17 in 559 mm x 432 mm x 432 mm	18.5 in x 13.75 in x 13.75 in 470 mm x 349 mm x 349 mm	1	H,A,I	9005-03036-804	70 lbs 32 kg
Compac Safety Cabinets							
12 gal 45 L	1-door, self-close	35 in x 23.25 in x 18 in 889 mm x 591 mm x 457 mm	30.5 in x 20 in x 14.56 in 775 mm x 508 mm x 370 mm	1	FM,H,A,I	9005-03035-804	137 lbs 62 kg
Slimline Safety Cabinets							
22 gal 83 L (standard)	1-door, self-close	65 in x 23.25 in x 18 in 1651 mm x 591 mm x 457 mm	60.5 in x 20 in x 14.56 in 1537 mm x 508 mm x 370 mm	3	FM,H,A,I	9005-03037-804	211 lbs 96 kg
Undercounter Safety Cabinet							
22 gal 83 L	2-door, self-close	35 in x 35 in x 22 in 889 mm x 889 mm x 559 mm	27.375 in x 31.75 in x 18.75 in 695 mm x 806 mm x 476 mm	1	FM,H,A,I	9005-03038-804	199 lbs 90 kg

[†]For Approval and Compliance Key, see page 3.

SP-03110 Label pack of 10 content labels and one "Hazardous – Keep Fire Away label"



Type I Safety Cans

Self-closing, leakproof lid provides safety from spills

- Fully compliant—meets OSHA and NFPA Code 30 for the safe storage of flammables.
- Passed independent rigorous testing – FM approved, UL/ULC listed, and TÜV certified. All are accepted under CARB.
- Full-length, chemically resistant stainless steel flame arrester dissipates heat to prevent flashback ignition. Longer length allows easy, secure placement of gas nozzle.
- Leakproof, positive pressure-relief cap automatically vents to prevent rupture or explosion.
- Self-closing lid controls vapors and spills.
- Premium 24-gauge coated steel body and handle offer maximum durability and chemical resistance. Quality is backed by exclusive Ten-Year Warranty.
- Large ID Zone identifies contents to reduce misuse or to designate department, shift or crew.
- Rounded steel handle for comfortable handling.
- Large 1/2-in (13-mm) grip lip along bottom helps support pouring.
- Reinforcing ribs strengthen sidewalls for extra “bumper-guard” protection.
- Double-lock seams provide four thicknesses of steel to guard against bumps and bangs.
- Durable, high-gloss powder paint resists solvents, corrosion and humidity.
- Trilingual warning label is in English/Spanish/French.
- 100% tested to guarantee leakproof construction.



Description and Capacity	Dimensions OD x H	Approv/Lstg [†] Regulation	Red Can Model No	Red Can / Funnel Model No	Yellow Can Model No	Yellow Can / Funnel Model No	Delvr Wt
--------------------------	-------------------	-------------------------------------	------------------	---------------------------	---------------------	------------------------------	----------

Trigger Handle Type I Safety Cans

1 gal (4 L) Steel safety can	7.25 in x 11.5 in 184 mm x 292 mm	FM, UL/ULC	9006-03068-803	—	—	—	4 lbs 2 kg
---------------------------------	--------------------------------------	------------	----------------	---	---	---	---------------

Swinging Handle Type I Safety Cans

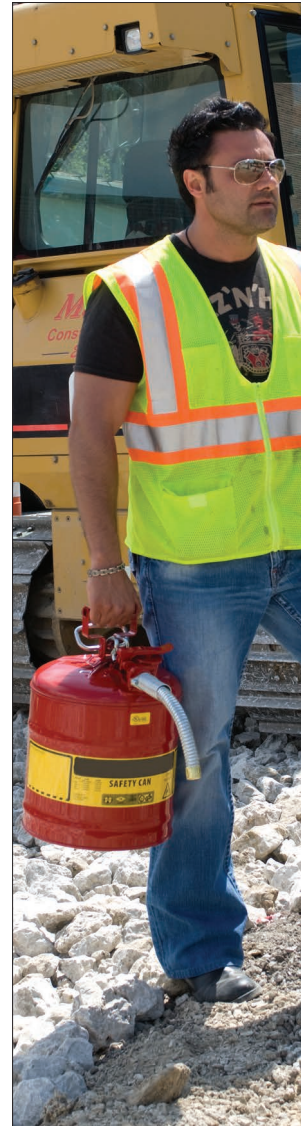
1 gal (4 L) Steel safety can	9.5 in x 11 in 241 mm x 279 mm	FM, UL/ULC*	9006-03077-803	9006-03071-803	9006-03078-801	9006-03072-801	4 lbs 2 kg
2 gal (7.5 L) Steel safety can	9.5 in x 13.75 in 241 mm x 349 mm		9006-03081-803	9006-03073-803	9006-03082-801	9006-03074-801	
2.5 gal (9.5 L) Steel safety can	11.75 in x 11.5 in 298 mm x 292 mm		9006-03079-803	9006-03069-803	9006-03080-801	9006-03070-801	7 lbs 3 kg
5 gal (19 L) Steel safety can	11.75 in x 16.875 in 298 mm x 429 mm		9006-03083-803	9006-03075-803	9006-03084-801	9006-03076-801	9 lbs 4 kg

*Approvals apply to safety can. [†]For Approval and Compliance Key, see page 3.

Type II Safety Cans

Vented design provides smooth, slug-free liquid flow

- Fully compliant—meets OSHA and NFPA Code 30 for the safe storage of flammables.
- Passed independent rigorous testing – FM approved, UL/ULC listed, and TÜV certified. All are accepted under CARB.
- Patented AccuFlow™ manifold automatically vents for smooth, fast, slug-free pouring.
- Easy-to-use Safe-Squeeze® trigger provides accurate control of liquid flow.
- Flexible 9-in (229-mm) hose provides targeted pouring into small openings—available in two diameters: 5/8-in (16-mm) and 1-in (25-mm).
- Chemically-resistant, long-life stainless steel flame arrester stops flashback ignition.
- Leakproof, positive pressure-relief cap automatically vents to prevent rupture or explosion.
- Self-closing, gasketed lid controls vapors and spills.
- Premium 24-gauge coated steel body and handle for maximum durability and chemical resistance. Quality is backed by exclusive Ten-Year Warranty.
- Offset fill port with ergonomic lift lever makes filling easier.
- Extra large ID Zone reduces misuse and warns of danger in three languages.
- 1/2-in (13-mm) grip lip along bottom helps support pouring.
- Reinforcing ribs strengthen sidewalls for extra “bumper-guard” protection.
- Double-lock seams provide four thicknesses of steel to guard against bumps and bangs.
- Durable, high-gloss powder paint resists solvents, corrosion and humidity.
- Trilingual warning label is in English/Spanish/French.
- 100% tested to guarantee leakproof construction.



Description and Capacity	Hose Dimensions OD x L	Can Dimensions OD x H	Approv/Lstg [†] Regulation	Red Can Model No	Yellow Can Model No	Delivr Wt
1 gal (4 L) Steel safety can with hose	0.625 in x 9 in 16 mm x 229 mm	9.5 in x 10.5 in 241 mm x 267 mm	FM, UL/ULC	9006-03089-803	9006-03090-801	7 lbs 3 kg
2 gal (7.5 L) Steel safety can with hose		9.5 in x 13.25 in 241 mm x 337 mm		9006-03091-803	—	9 lbs 4 kg
2.5 gal (9.5 L) Steel safety can with hose		11.75 in x 12 in 298 mm x 305 mm		9006-03094-803	9006-03095-801	11 lbs 5 kg
5 gal (19 L) Steel safety can with hose		11.75 in x 17.5 in 298 mm x 445 mm		9006-03092-803	9006-03093-801	11 lbs 5 kg
2.5 gal (9.5 L) Steel safety can with hose	1 in x 9 in 25 mm x 229 mm	11.75 in x 12 in 298 mm x 305 mm		9006-03087-803	9006-03088-801	9 lbs 4 kg
5 gal (19 L) Steel safety can with hose		11.75 in x 17.5 in 298 mm x 445 mm		9006-03085-803	9006-03086-801	11 lbs 5 kg
Replacement flexible hose for Type II Safety Cans		—	—	9009-03108-806	9009-03108-806	0.5 lbs 1 kg

[†]For Approval and Compliance Key, see page 3.



Type II Transport and Dispensing Safety Cans

Ideal when remote usage of gas-fueled equipment is needed

Compliance with Department of Transportation regulations for over-the-road transport of flammables is simpler and more affordable than ever with these D.O.T. Safety Cans.

To prevent vapor release and spills during transport, a hold-down bracket is tethered to the spout and equipped with a big, easy-to-grasp tightening screw. When used for the transport of fuel, the fusible link bracket is easy to engage and guards against content spillage and vapor release as required by D.O.T. The fusible link melts at 165° F (74° C) to prevent dangerous pressure buildup at elevated temperatures. Simply disengage the fusible link bracket when the cans are not being used for transportation purposes and the cans act like normal safety cans. Trigger mechanism opens the piston-actuated spout and vacuum release valve for accurate pouring. A release of the handle instantly closes the valve to guard against spills.

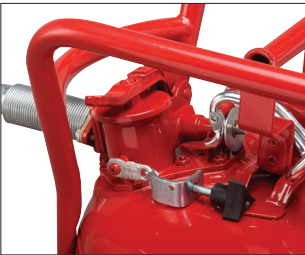
Built-in safety features include internal flame arresters to dissipate heat and prevent flashback ignition; leak-tight, self-closing lid; automatic venting between 3 and 5 psig (0.2 and 0.35 bar); and heavy roll bars to protect the spout.

Meets D.O.T. and HM-181 requirements. United Nations-approved. UN Marking: 1A1/Y1.2/100. Accepted container under CARB. Complies with FM Global.



Transport Mode

To prevent vapor release and spills during transport, a fusible link-protected hold-down bracket is tethered to the spout and equipped with an easy-to-grasp tightening screw



Usage and Fill Mode

Simply disengage the hold-down bracket when the can is not being used for transportation purposes. Tethered magnetic bracket rests on top of can ... no small parts to lose!



Description and Capacity	Hose Dimensions Outer Dia. x L	Can Dimensions Outer Dia. x H	Approv/Lstg [†] Regulation	D.O.T. Model No
2.5 gal (9.5 L) D.O.T. Type II Can	0.625 in x 9 in 16mm x 229 mm	11.75 in x 12 in 298 mm x 305 mm	FM, D.O.T., UN	9006-03147-803
2.5 gal (9.5 L) D.O.T. Type II Can	1 in x 9 in 25 mm x 229 mm	11.75 in x 12 in 298 mm x 305 mm	FM, D.O.T., UN	9006-03148-803
5 gal (19 L) D.O.T. Type II Can	0.625 in x 9 in 6 mm x 229 mm	11.75 in x 17.5 in 298mm x 445 mm	FM, D.O.T., UN	9006-03149-803
5 gal (19 L) D.O.T. Type II Can	1 in x 9 in 25 mm x 229 mm	11.75 in x 17.5 in 298 mm x 445 mm	FM, D.O.T., UN	9006-03150-803

[†]For Approval and Compliance Key, see page 3.



Oily Waste Cans

Dispose of oil-soaked rags and prevent fires caused by stray sparks or spontaneous combustion

Rags and cloths soaked with solvents, thinners, linseed oil, combustible adhesives and other flammable liquids present a serious fire risk if you don't discard them properly. The lids on these cans open to no more than 60° and stay closed when not in use, isolating contents from fire sources and limiting oxygen to virtually eliminate the risk of spontaneous combustion. Round construction and elevated base allow air to circulate around the cans, dispersing heat and reducing moisture buildup and rusting. Durable steel construction and powder-coat finish provide chemical resistance. All cans are FM-approved and most are UL-listed. All cans carry a 10-year warranty.



Description and Net Capacity	Dimensions OD x H	Approv/Lstg [†] Regulation	Foot-Operated Model No	Hand-Operated Model No	Delivr Wt
2 gal (8 L) Countertop oily waste can	9.625 in x 9.125 in 244 mm x 232 mm	FM	—	9006-03062-803	7 lbs 3 kg
6 gal (20 L) Oily waste can	11.875 in x 15.875 in 302 mm x 403 mm	FM,UL	9006-03054-803	9006-03061-803	11 lbs 5 kg
10 gal (34 L) Oily waste can	13.94 in x 18.25 in 354 mm x 464 mm		9006-03055-803	9006-03058-803	
14 gal (52 L) Oily waste can	16.06 in x 20.25 in 408 mm x 514 mm		9006-03056-803	9006-03059-803	15 lbs 7 kg
21 gal (80 L) Oily waste can	18.375 in x 23.44 in 467 mm x 595 mm		9006-03057-803	9006-03060-803	22 lbs 10 kg

[†]For Approval and Compliance Key, see page 3.

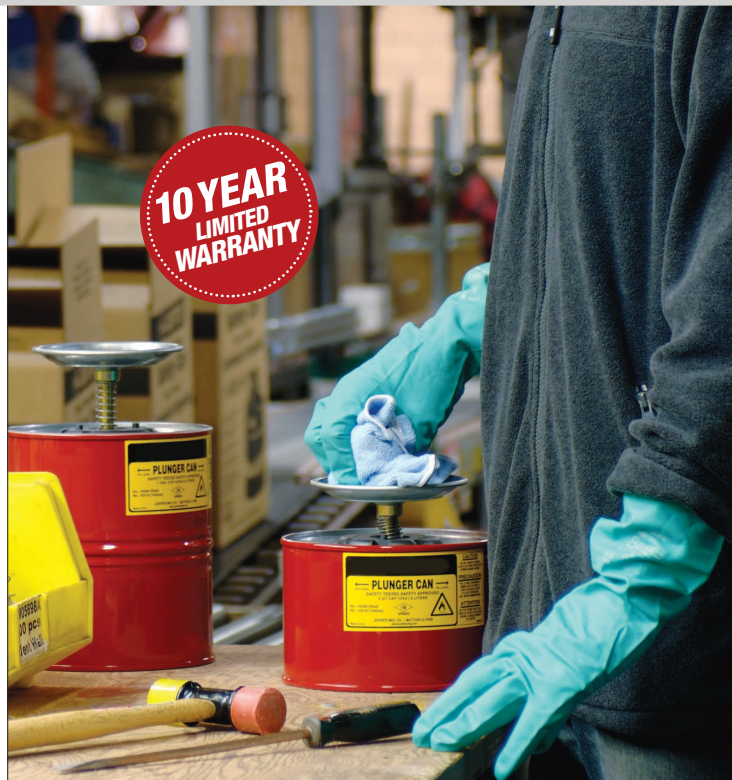


Plunger Cans

Moisten cleaning cloths quickly and easily—smart-pump brings more liquid to the top and requires less time between refills

Dispense flammable liquids and solvents safely, without waste or exposure. Made of chemically resistant Ryton® and brass, the pump base is designed to leave less liquid in the bottom before having to refill.

Pushing down on the pump assembly fills the upper pan with liquid. Surplus liquid drains back into the reservoir safely. The perforated upper pan serves as a flame arrester. Top rim has a molded edge protector for smooth, trouble-free moistening.



Description and Capacity	Dasher Assembly	Smart-Pump Assembly	Dasher Diameter	Dimensions OD x H	Approv/Lstg [†] Regulation	Model No	Delvr Wt
1 pint (0.5 L) Steel plunger can	Steel	Brass & Ryton®	2.75 in 70 mm	4.875 in x 5.25 in 125 mm x 133 mm	FM	9006-03064-803	2 lbs 1 kg
1 quart (1 L) Steel plunger can			5 in 128 mm	7.25 in x 5.625 in 185 mm x 143 mm		9006-03065-803	
2 quart (2 L) Steel plunger can				7.25 in x 7.875 in 185 mm x 200 mm		9006-03067-803	
1 gal (4 L) Steel plunger can				7.25 in x 10.5 in 185 mm x 267 mm		9006-03066-803	4 lbs 2 kg

Ryton® is a registered trademark of Chevron Phillips Chemical Co. [†]For Approval and Compliance Key, see page 3.

Safety Drum Cover

Convert open-top 55-gal (200-L) steel drums into handy receptacles

Self-closing cover turns a drum into a fire-safe receptacle for combustible waste. Simply use a screwdriver and wrench to attach the cover to a drum. For added safety, a replaceable fusible-link assembly melts at 165°F (74°C) to automatically allow spring-loaded cover to slam shut if there is a fire in the drum. Durable steel construction and powder-coat finish provide excellent chemical resistance. Fits drums from 22¼-in to 22¾-in (565- to 578-mm) diameter. Cover is FM-approved.



Description and Capacity	Approv/Lstg [†] Regulation	Model No	Delvr Wt
Self-close drum cover with fusible link for 55-gal (200-L) drums	FM	9009-03096-806	15 lbs 7 kg

[†]For Approval and Compliance Key, see page 3.



Drum Funnel

Prevent spills when transferring flammable solvents, thinners, oils or paint wastes

- Wide-mouth opening with hinged, stay-open lid.
- Built-in flame arrester prevents fire intrusion.
- Self-closing lid in case of fire.
- Galvanized steel with durable exterior epoxy powder-coat finish.

Safely transfer flammable liquids into a 30- or 55-gal (110- or 200-L) drum using this 2.6-gal (9.8-L) capacity safety funnel that fits into a 2-in (51-mm) bung. Wide 10¾-in (273-mm) mouth handles rapid pouring without spills. A built-in brass flame arrester absorbs and dissipates heat, preventing any external ignition source from reaching the drum's contents. Self-closing cover features a fusible link that melts at 165°F (74°C) and automatically shuts in case of a fire. Heavy-duty 18-gauge (1-mm thick) galvanized steel construction has an electrostatically applied epoxy powder-coat, offering excellent durability and chemical resistance. When the lid is closed, the funnel reduces vapors and accepts a lock (not included) to prevent unauthorized access. FM-approved and EPA and OSHA compliant.



Description	Funnel Size Diameter x H	Mouth Diameter	Approv/Lstg [†] Regulation	Model No	Delvr Wt
Safety drum funnel with self-closing cover and 6 in (152 mm) flame arrester	10.75 in x 10 in 273 mm x 254 mm	10.75 in 273 mm	FM	9009-03105-806	11lbs 5 kg

[†]For Approval and Compliance Key, see page 3.

Antistatic Wire

Provides additional reassurance when storing flammable liquids in drums

- Reduce fire risks from static electricity.

Prevent sparks from static electricity generated by movement and flow of flammable liquids. Bonding between containers during liquid transfer, and connecting drums to an earth ground are required under federal and local codes.



Description	End Connections	Model No
Flexible wire, 3 ft 1 m	Dual alligator clips 0.625 in 16 mm Jaws	9009-03146-807



U.S. CHEMICAL STORAGE®
BUILDINGS AND LOCKERS

U.S. Chemical Storage® Customized Buildings and Pre-Engineered Outdoor Safety Lockers

Basic Concepts®, a market leader in the creation of innovative spill containment solutions, now offers a wide range of chemical storage options through affiliation with U.S. Chemical Storage®. U.S. Chemical Storage® is dedicated to keeping people, facilities and environments safe with customizable buildings and pre-engineered chemical storage lockers.

Select custom chemical storage buildings for a variety of government and commercial chemical storage applications, including hazardous material, hazardous waste, flammable liquids, lithium batteries, chemical consolidation, medical and laboratory facilities, and more.

We are proud to be an American-owned company that serves our nation's government and qualifying federal organizations with the responsibility to protect the American people.



Compliant, four-hour fire-rated, SUPERloc™ paint storage building with three-compartment construction and integral dry chemical fire suppression system.



Non-combustible, CHEMloc™ pallet and tote storage building featuring heating, racking systems and explosion relief panels.

Why choose customized chemical storage buildings from U.S. Chemical Storage®?

- Free expert chemical storage consultation
- Continuously welded heavy-gauge steel construction
- Tubular steel framing
- Galvanized steel grate flooring
- Standard and custom sizes available
- Third-party approvals, including FM and Warnock Hersey
- 15-year structural warranty
- Application-based accessories
- Chemical- and weather-resistant coating – inside and out
- Third-party compliant accessories
- Turnkey design, delivery and installation



Need help evaluating your chemical storage needs?

Our experienced sales engineers will walk you through the ordering process to help evaluate and provide expert advice tailored to your specific storage needs. Call us at 800-285-4203.

U.S. Chemical Storage® Custom Fire-Rated Buildings

Fire-rated chemical storage buildings offer unmatched safety and security for storing flammable and combustible materials.

The **two-hour fire-rated FIREloc™** storage building is designed to be placed within 10- to 30-ft (3.1- to 9.1-m) of existing structures and/or property lines.*

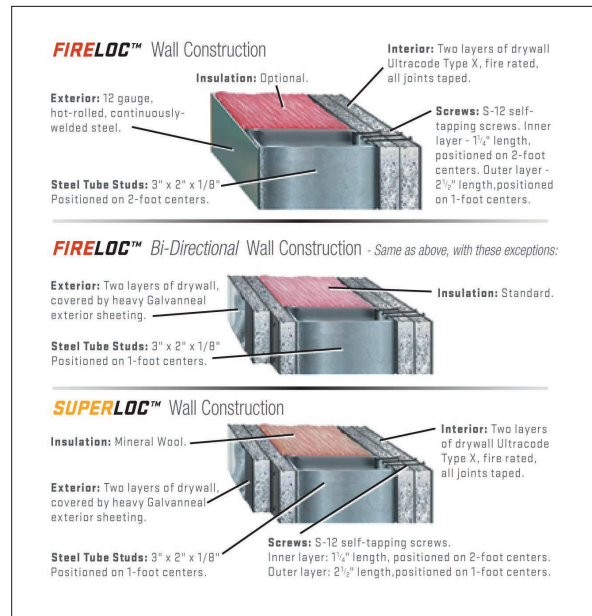
The **four-hour fire-rated SUPERloc™** chemical storage buildings can be located 10-ft (3.1-m) from, or within existing structures.*

All U.S. Chemical Storage® fire-rated buildings use third-party tested, listed or approved wall designs.

Customizable designs and sizes are available for all product lines. Single-piece unit lengths are available up to 12-ft (3.7-m) wide by 52-ft (15.8-m) long by 13-ft (4-m) high. Modular, two-piece, units are available in larger sizes – shown on page 38. Large single units have the ability to store up to 72 pallets and totes.

U.S. Chemical Storage® offers turnkey solutions, including design, delivery, installation and service for your specific chemical and material storage projects.

**Check with local authorities about fire separation distances for your specific chemical storage applications.*



Fire-rated wall construction with tubular supports.



Four-hour fire-rated, 64-drum, SUPERloc™ chemical storage building with explosion-proof (EP) lighting, EP mechanical ventilation, and push-back racking.



U.S. Chemical Storage® Custom Non-Combustible and Modular Buildings

Non-combustible chemical storage buildings available through Basic Concepts® are designed and engineered for storing hazardous materials 30-ft (9.1-m) or more from existing structures.*

The CHEMloc™ storage building is a heavy-gauge steel structure of non-combustible construction that sets the standard for storing chemicals and other hazardous materials. Non-combustible chemical storage buildings are designed to keep people, facilities and environments safe, while diminishing potential risks involved with storing hazardous materials.



Non-combustible, CHEMloc™ chemical storage building with roll-up doors, solid partition walls, ventilation, alarm systems and integral dry chemical fire suppression.

Modular Chemical Storage Buildings

Designed to offer increased storage space when smaller containment solutions are simply not an option, multi-piece chemical storage buildings maximize storage square footage. Modular chemical storage buildings are available with fire-rated and non-combustible constructions. A wide range of accessories for safely maintaining your chemical storage buildings are also available. Learn more about our custom building accessories on page 43.

What it Means

Larger structure options in two or more units are shipped to the site area, rigged into position and bolted together for a complete installation. Partition walls may be added to compartmentalize and segregate non-compatible chemicals or specialty gases. Benefits of modular chemical storage buildings include a larger footprint as compared to single-piece buildings, as well as cost savings when redundant heating, cooling and electrical packages are not furnished for multiple buildings.

**Check with local authorities about fire separation distances for your specific chemical storage applications.*



Modular chemical storage building with double leaf doors, mechanical ventilation, and integral dry chemical fire suppression systems.



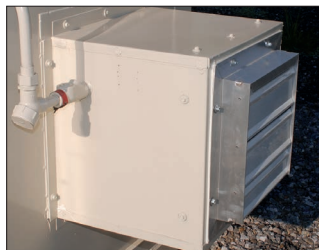
Parts and Accessories Specific to Your Custom Building Application

A wide variety of parts and accessories, including explosion-proof options, meet the most exacting specifications, allowing a customized building design, tailored to your requirements. U.S. Chemical Storage® offers guidance through the entire process, step-by-step, providing expert advice to ensure our chemical storage solutions meet your requirements.

View our wide variety of accessories:



Explosion-relief panels



Mechanical ventilation



Integral dry chemical fire suppression



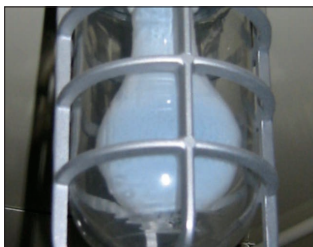
Wet sprinklers



Optimized pallet and rack storage



Personal safety



Lights



Electrical accessories



Heating systems



Cooling systems



Doors



Spill detection



Vapor detection sensors



Flooring options



Ramps



Partition walls – solid and wire



U.S. Chemical Storage® Pre-Engineered Outdoor Safety Lockers

When full customization is not necessary, these non-combustible outdoor lockers, constructed with heavy gauge galvanized steel and built-in secondary containment, are fully compliant, including meeting EPA 40CFR, NFPA 30 and NFPA 1 regulations. FM-approved and backed by a 15-year structural warranty, non-combustible models store flammable, combustible and other hazardous chemicals. Available in sizes ranging from 2- through 16-drum capacities, pre-engineered lockers are offered with a variety of options and accessories, including explosion-relief panels (ERP), to keep hazardous material storage safe and maintained.*



Wide 54-inch door permits loading of drums via a dolly or pallet.

These lockers feature:

- Heavy-gauge galvanized steel construction
- Secondary containment – leakproof all-welded sump
- Galvanized steel grate flooring
- 54-in (1372-mm) wide steel door system with three-point lock hardware on sizes 6-drum and larger—accepts pallet load. Smaller 2-drum and 4-drum come with 42-in (1067-mm) door for loading drums via a ramp and dolly.
- Natural draft ventilation
- NFPA diamond decal for identification of contents
- Forklift channels for easy relocation
- Anchoring plates for maximum hold-down protection
- Multiple static grounding connections
- Chemical- and UV-resistant coating – inside and out
- FM-approved and EPA compliant

**Check with local authorities about fire separation distances for your specific chemical storage applications. In addition to non-combustible models, fire-rated construction is available with a 2-hour or 4- hour fire rating.*

55-Gal Drum Capacity	Sump Capacity	Nominal Outside Dimensions W x D x H		Standard Safety Lockers		Lockers with Explosion-Relief Panels	
		Exterior	Interior	Model No.	Weight	Model No.	Weight
2	120 gal 454 L	5 ft x 3 ft x 6 ft 3 in 1524 mm x 914 mm x 1905 mm	4 ft 6 in x 2 ft 6 in x 4 ft 7.5 in 1372 mm x 762 mm x 1410 mm	DS02NR	982 lbs 446 kg	DS02NRX	1069 lbs 485 kg
4	100 gal 379 L	5 ft x 5 ft x 6 ft 3 in 1524 mm x 1524 mm x 1905 mm	4 ft 6 in x 4 ft 6 in x 5 ft 2 in 1372 mm x 1372 mm x 1575 mm	DS04NR	1341 lbs 609 kg	DS04NRX	1428 lbs 648 kg
6	140 gal 530 L	7 ft x 5 ft x 8 ft 1 in 2134 mm x 1524 mm x 2464 mm	6 ft 6 in x 4 ft 6 in x 7 ft 1981 mm x 1372 mm x 2134 mm	DS06NR	1658 lbs 753 kg	DS06NRX	1745 lbs 792 kg
9	198 gal 750 L	7 ft x 7 ft x 8 ft 1 in 2134 mm x 2134 mm x 2464 mm	6 ft 6 in x 6 ft 6 in x 7 ft 1981 mm x 1981 mm x 2134 mm	DS09NR	2101 lbs 953 kg	DS09NRX	2203 lbs 1000 kg
12	253 gal 958 L	7 ft x 9 ft x 8 ft 1 in 2134 mm x 2734 mm x 2464 mm	6 ft 6 in x 8 ft 6 in x 7 ft 1981 mm x 2591 mm x 2134 mm	DS12NR	2442 lbs 1108 kg	DS12NRX	2616 lbs 1187 kg
16	326 gal 1234 L	9 ft x 9 ft x 8 ft 1 in 2734 mm x 2734 mm x 2464 mm	8 ft 6 in x 8 ft 6 in x 7 ft 2591 mm x 2591 mm x 2134 mm	DS16NR	2959 lbs 1343 kg	DS16NRX	3126 lbs 1418 kg



Accessories for Pre-Engineered Lockers

Customize an outdoor safety locker to your specific application. We provide free, expert advice to ensure our chemical storage solution will meet your requirements. Refer to available accessory options on page 43. They include:

- Explosion relief panels to reduce the potential damage associated with an explosion
- Explosion-proof ventilation equipment for the safe removal of noxious or ignitable fumes
- Wet or dry fire suppression systems for added protection against accidental fires
- Vapor detection sensors and leak detection alarm systems for extra security
- Comfort heating and cooling for employees from 50°F to 70°F
- Process heating and cooling for your chemicals from 40°F to 250°F
- Fiberglass grating and poly liners for acids and corrosives
- Shelving and lighting options
- Emergency eyewash and shower systems
- Racking systems, floor rollers, and ramps
- Partition walls—solid and wire
- Door options—hinged, sliding, or coiling



Position a fire-rated locker close to your building for convenient access to contents.

Ask about our 2- and 4-hour fire-rated lockers for storage of flammables at locations close to other existing structures.



Optional 60-inch double-door model simplifies loading palletized drums.



Smoker’s Cease-Fire® Cigarette-Butt Receptacles

Keep entrances clean from cigarette litter— fire-tested and FM-approved for safety

Made of flame-retardant and sturdy polyethylene, this low-maintenance smoker’s friend won’t rust, dent or crack. Innovative self-extinguishing design collects unsightly cigarette litter safely and reduces the risk of fire. Tie-down notches offer security and greater stability under severe weather conditions. Receptacles include a galvanized steel bucket that collects thousands of butts.

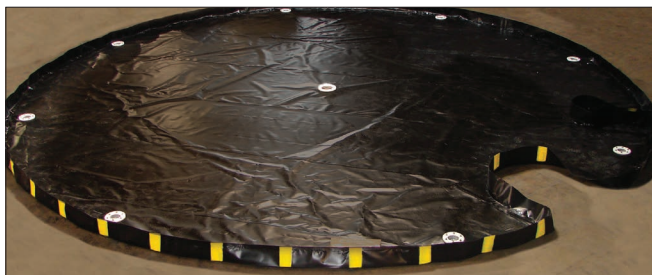


Description	Color	Dimensions H x Diameter	Approv/Lstg [†] Regulation	Capacity	Model No	Delvr Wt
Original Smoker’s Cease-Fire®	Pewter Gray	38.5 in x 16.5 in 978 mm x 419 mm	FM	4 gal 15 L	9011-03137-SMK	11 lbs 5 kg
Original Smoker’s Cease-Fire®	Adobe Beige				9011-03134-SMK	
Original Smoker’s Cease-Fire®	Deco Black				9011-03135-SMK	
Original Smoker’s Cease-Fire®	Terra Cotta				9011-03138-SMK	
Original Smoker’s Cease-Fire®	Forest Green				9011-03136-SMK	

[†]For Approval and Compliance Key, see page 3.

Spill containment customized for your specific application!

Let our experienced, knowledgeable sales and engineering staff create a solution based on your application requirements. See how we've helped others:



Background A silo with multiple pipes running along the inside wall needed cleaning. There were a number of catwalks with grated decking inside the silo which held equipment and workers that needed protection against any wash water from above.

Solution Basic Concepts designed a round-shaped berm with a cutout to accommodate the piping. Deployed on the upper level, the customized berm captured the overspray and wash water, thereby protecting personnel and equipment from the power washing work above.



Background A customer required a berm that would stand up to repeated usage with a wide variety of equipment. They specified extra puncture and abrasion resistance to increase the longevity of the berm. Rather than ordering track mats as a separate accessory for the berm, they wanted "unfold and go" convenience for quick use.

Solution Basic Concepts built a berm with welded-in track mats, resulting in increased abrasion resistance, quicker set-up, and no worries about keeping track of separate loose pieces.



Background An oddly-shaped, six-sided storage room required spill containment for 55-gallon drums. The customer wanted to maximize storage capacity by utilizing the full footprint of the room.

Solution Basic Concepts designed a customized berm to line the entire drum room for proper secondary containment of the drums.



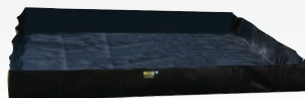
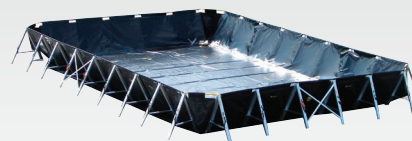
Background A stationary transformer mounted on a concrete pad required overflow spill protection.

Solution Basic Concepts provided leakproof secondary containment by engineering a berm with a square cutout which included a fluid-tight zipper to wrap around the concrete pad.

Call us today at 800-285-4203 for a free consultation to help solve your spill containment issue!



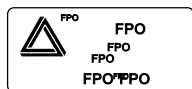
Custom Containment!
Nearly any berm :: Almost any size or shape



TOTAL CONTAINMENT SOLUTIONS

email: Sales@BasicConcepts.com :: 1-800-285-4203 :: BasicConcepts.com

**PROTECTING PEOPLE AND THE ENVIRONMENT ACROSS THE GLOBE
FOR MORE THAN 25 YEARS.**



©2016 Basic Concepts Inc. BCI-105 (0416)