



Top Loading Arms

For bulk loading of Rail, Truck and Totes.
Updated designs for safety and ease of use.



Bottom Loading Arms

For bulk loading and unloading. Ease of use for safety
and operators, great option for speed and safety.



Swivel Systems

Our swivels are 100% Domestic with updated designs
for longevity and replacement parts readily available.

What separates Excel Loading Systems



Over 25 years of experience of liquid handling in the Petro-Chem Industry.

All 100% Domestic Product

- » Swivels
- » Elbows
- » Pipe
- » Spring components

Quick Delivery

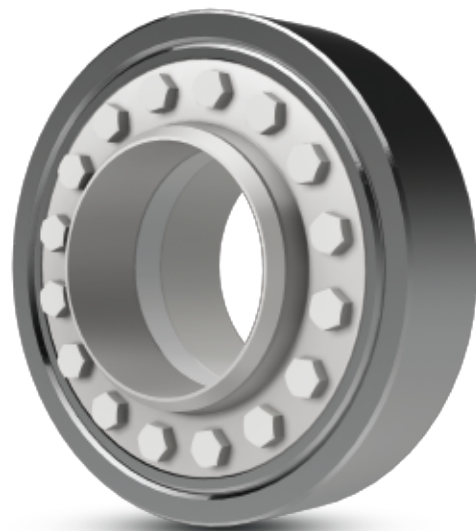
- » Average 4 week delivery
- » Ability to expedite for rush jobs

Traceability

- » Material Test Reports
- » Ability to conform to AML

Service

- » In-field service
 - Installation, Adjustment & Maintenance
- » Shop rebuilds
- » Replacement parts available



Designed for Safety

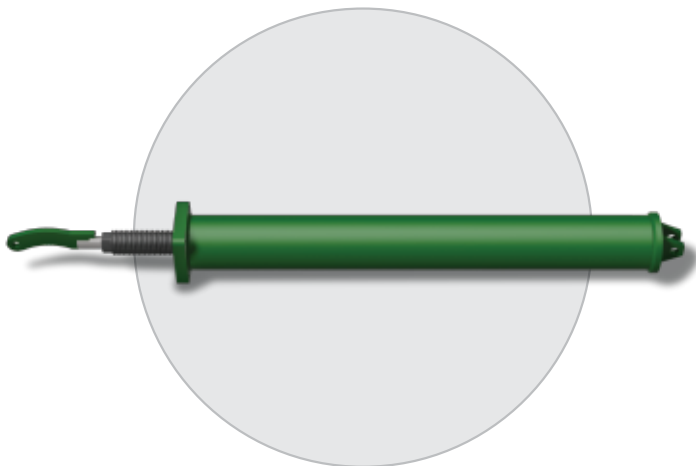
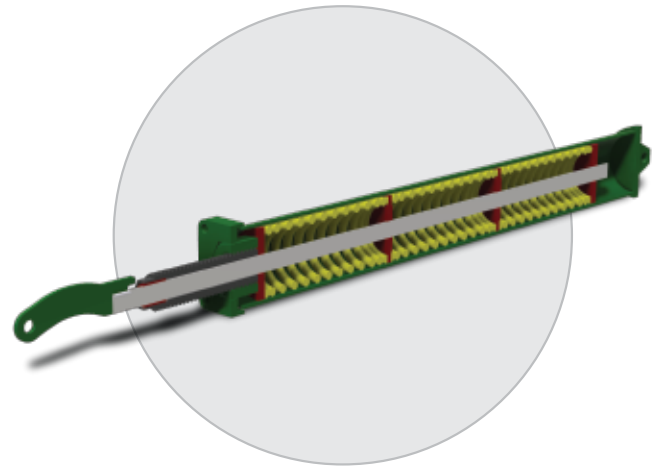
The PFS spring assembly is designed for safety and ease of use. Manufactured to the highest quality and safety standards in the industry, make the PFS your preferred choice of spring assembly.

PFS Spring Design

Our spring assembly is designed for safe adjustment and reliability in the field. Our spring cylinder is completely enclosed which brings an extra level of safety to the spring assembly.

Adjustment

The PFS Spring Assembly has two adjustment points, one adjustment point on the arm brackets for larger adjustments, and one on the lead screw for fine tuning.



Domestic

PFS spring assembly is made entirely from 100% Domestic products. This helps to ensure quality from each component of the assembly.

Maintenance

In-field replacement and adjustment services available, as well as factory refurbishment and rebuild services.

Safety

Our completely enclosed spring cylinder design eliminates many risks associated with traditional springs. Allows for maximum adjustment while keeping the operator safe.

XL-1.0 Swivel Joint



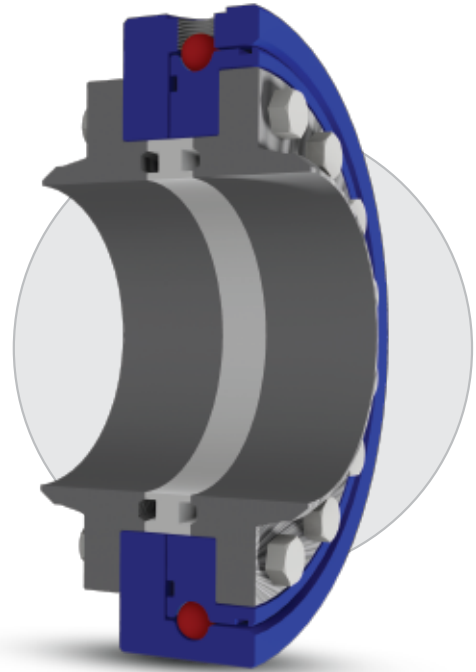
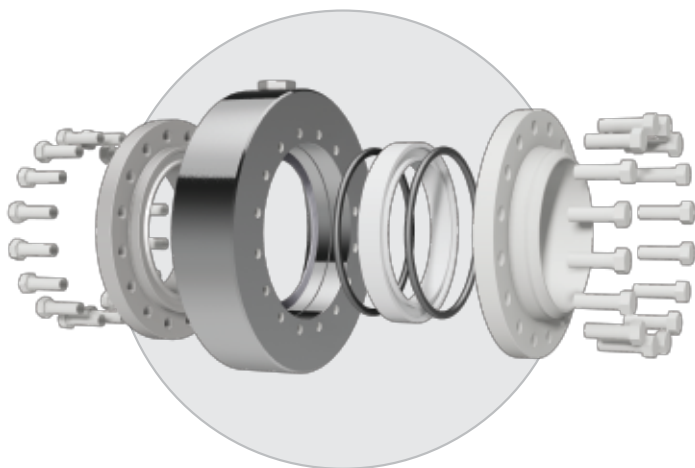
The XL-1.0 is designed for high durability and ease of maintenance. It is manufactured to the highest quality and safety standards in the industry. The XL-1.0 is the preferred choice for swivels.

XL-1.0 Design

The XL-1.0 meets the industry's highest standards in the oil and gas, food and chemical industries. With precision machining and finishes the XL-1.0 provides high pressure sealing for nearly all media.

Durability

The XL-1.0 improves performance and durability. Special hardened ball races enhance longevity and ease of maintenance, making the swivel easy to maneuver under various mechanical and hydraulic loads.



Domestic

XL-1.0 is made entirely from domestic products to ensure quality and traceability from each component of the swivel.

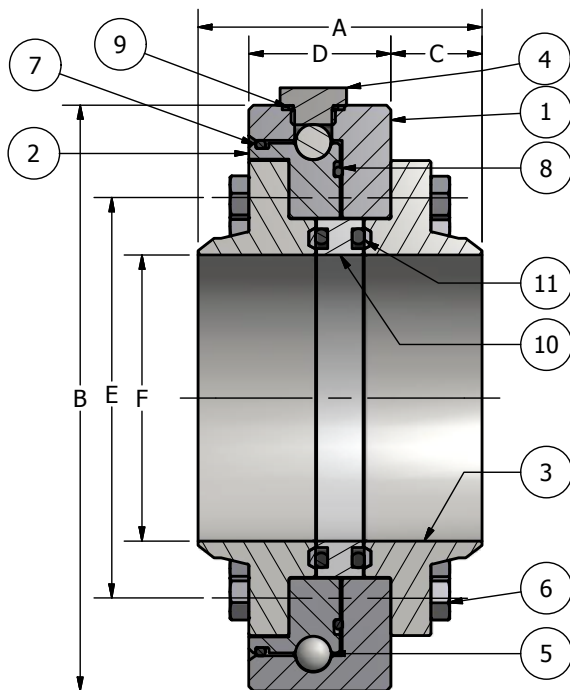
Performance

The precision tolerances and corrosion resistant seal faces assure a tight seal as well as low-maintenance design.

Maintenance

Our split flange design provides minimal maintenance. No welding is required to replace swivels in line. Seals are accessible without removing ball bearings. The ability to ship an entire swivel or any component allows ultimate flexibility and minimizes downtime.

Swivel Breakdown



Parts List

Item	Qty	Description
1	1	Body
2	1	Insert
3	2	Swivel Flange
4	1	Ball Plug
5	45	Ball Bearing
6	2	Bolt, Grade 5
7	1	Bearing O-Ring, Outer
8	1	Bearing O-Ring, Inner
9	1	Ball Plug O-Ring
10	1	Seal Block
11	2	Seal Block O-Ring

Dimensions

Size	A	B	C	D	E	F
2"	4	6.25	1.25	2	3.75	2
3"	4	7.25	1.25	2	4.75	3
4"	4	8.25	1.25	2	5.75	4

Product Seal O-Rings

Size	Buna	Viton GFLT	FEP
2"	XL1.02SBA-01	XL1.02SBA-02	XL1.02SBA-03
3"	XL1.03SBA-01	XL1.03SBA-02	XL1.03SBA-03
4"	XL1.04SBA-01	XL1.04SBA-02	XL1.04SBA-03

Module Assembly

Size	Standard	High Temp	Buna	Viton GFLT	FEP
2"	XL1.02SMA	XL1.02HMA	XL1.02SBA-01	XL1.02SBA-02	XL1.02SBA-03
3"	XL1.03SMA	XL1.03HMA	XL1.03SBA-01	XL1.03SBA-02	XL1.03SBA-03
4"	XL1.04SMA	XL1.04HMA	XL1.04SBA-01	XL1.04SBA-02	XL1.04SBA-03

Seal Block Assembly

Flange

Size	A 105 Carbon Steel	316L Stainless Steel	Insert	Body	Seal Block	Ball Bearing (Qty)	Ball Plug
2"	XL1.02F-200	XL1.02F-201	XL1.02I-200	XL1.02B-200	XL1.02SB-200	BB0500 (32)	BP01
3"	XL1.03F-200	XL1.03F-201	XL1.03I-200	XL1.03B-200	XL1.03SB-200	BB0500 (39)	BP01
4"	XL1.04F-200	XL1.04F-201	XL1.04I-200	XL1.04B-200	XL1.04SB-200	BB0500 (45)	BP01

Bearings

Bearing Seals

Size	Inner	Outer	Ball Plug	Inner	Outer	Ball Plug
2"	XL1.02IBS-04	XL1.02OBS-04	XL1.02BPS-04	XL1.02IBS-05	XL1.02OBS-05	XL1.02BPS-05
3"	XL1.03IBS-04	XL1.03OBS-04	XL1.03BPS-04	XL1.03IBS-05	XL1.03OBS-05	XL1.03BPS-05
4"	XL1.04IBS-04	XL1.04OBS-04	XL1.04BPS-04	XL1.05IBS-05	XL1.05OBS-05	XL1.05BPS-05

High Temp Bearing Seals

Bottom Loading Arms



100% Domestic Material
Made in the USA
Material Test Reports
XL-1.0 Carbon Steel Swivel as Standard
5 year limited warranty on XL-1.0 swivel joints.

Materials of construction:

- » Carbon Steel
- » Carbon/Stainless
- » Carbon/Aluminum

Seals:

- » Buna
- » Viton GFLT
- » FEP



*A-Frame
AF-543*



*Bottom Loading
BL-503*



*Bottom Loading
BL-543*



*Bottom Loading
CW-30*



*Bottom Loading
BT-44*



*Bottom Loading
BT-377*

Top Loading Arms



100% Domestic Material

Made in the USA

Material Test Reports

XL-1.0 Carbon Steel Swivel as Standard

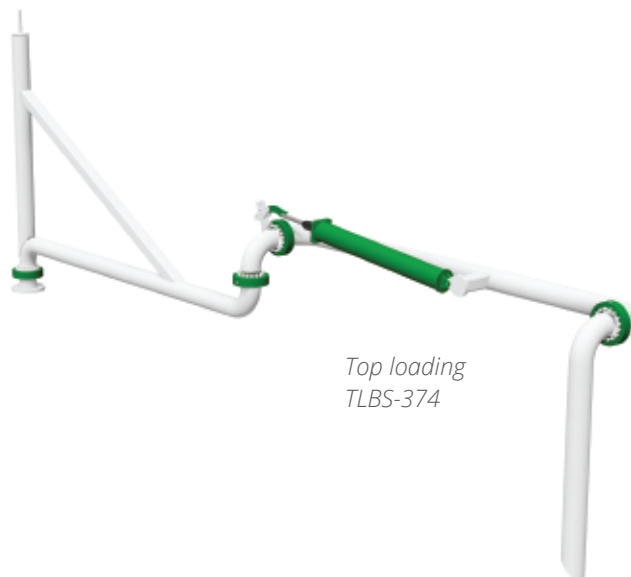
5 year limited warranty on XL-1.0 swivel joints.

Materials of construction:

- » Carbon Steel
- » Carbon/Stainless
- » Carbon/Aluminum

Seals:

- » Buna
- » Viton GFLT
- » FEP



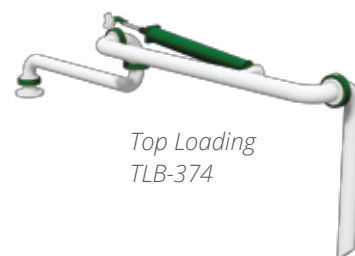
*Top loading
TLBS-374*



*Top Loading
TL-54*



*Top Loading
TL-544*



*Top Loading
TLB-374*



Excel Loading Systems is your sole source for Loading Arms.

Quality. Service. Safety.

Committed to High Quality Loading Products.



Toll Free: 877.277.7287 | Visit us online at ExcelLoading.com